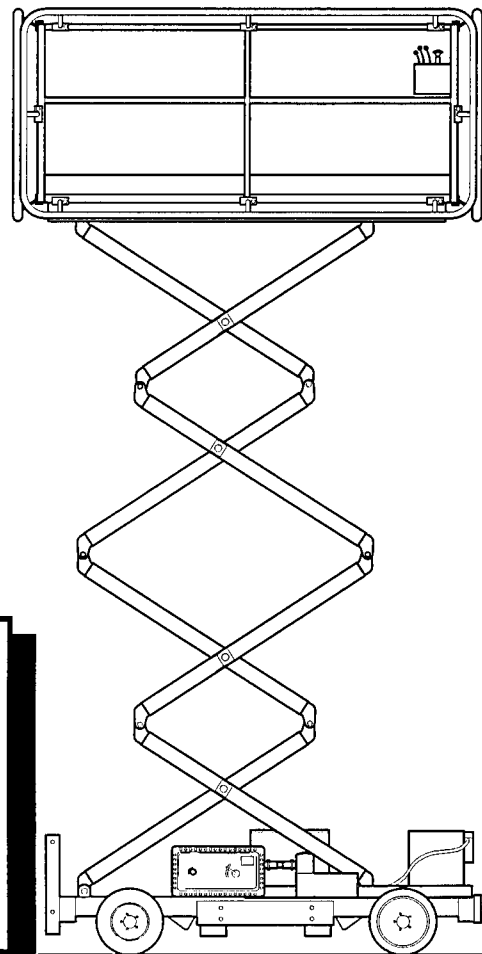


MODEL 2515 EX SCISSORS LIFT

 **TEREX AERIALS**
Milwaukee, Wisconsin

ILLUSTRATED PARTS CATALOG

FOR MACHINE
SERIAL NUMBER



The 2515 EX Scissors Lift is classified by
UNDERWRITERS LABORATORIES INC.®
as to fire, electric shock, and explosion
hazards :

CLASS I; GROUP D; DIVISION 1,
HAZARDOUS LOCATIONS ONLY.

Type EX INDUSTRIAL TRUCK.

Part No. 89-921795 • Revision 0.2, dated June, 1996 •

TABLE OF CONTENTS

INTRODUCTION

PRIMARY MACHINE COMPONENT GROUPS

SECTION 1: UNDERCARRIAGE

01.65: UNDERCARRIAGE ASSEMBLY

SECTION 4: PLATFORM

04.69: PLATFORM ASSEMBLY

04.99: PADDED BUMPER RAIL OPTION

SECTION 5: SCISSORS

05.05: SCISSOR ARM ASSEMBLY

SECTION 7: GROUND CONTROL BOX

07.62: GROUND ELECTRICAL CONTROL BOX

SECTION 9: PLATFORM CONTROL CONSOLE

09.64: PLATFORM CONTROL ASSEMBLY

SECTION 11: CYLINDERS

11.54: STEER CYLINDER

11.83: UPPER LIFT CYLINDER

11.84: LOWER LIFT CYLINDER

11.85: UPPER LIFT CYLINDER MOUNTING

11.86: LOWER LIFT CYLINDER MOUNTING

SECTION 99: DECALS

99.70: DECALS

INTRODUCTION

This Illustrated Parts Catalog is designed to help you identify and order the correct replacement parts for use on SIMON 2515 EX Scissors. All parts represented here are manufactured and supplied in accordance with Simon Aerials quality standards. We recommend that you use GENUINE SIMON AERIALS PARTS to insure proper OPERATION and reliable PERFORMANCE.

The SIMON AERIALS 2515 EX Scissors is classified by UNDERWRITERS LABORATORIES INC.® as to fire, electric shock, and explosion hazards CLASS I; GROUP D; DIVISION 1, HAZARDOUS LOCATIONS ONLY. Type EX INDUSTRIAL TRUCK.

In order to maintain "EX" certification, certain items (identified with the letters "EX" in the Parts List), MUST be replaced with IDENTICAL PARTS. There may be other items, not identified in the Parts List with the "EX" code, that may affect "EX" certification if not replaced with the proper components. When in doubt, please contact Simon Aerials, Inc.

Prices for all parts listed in this Catalog can be found in a separate Spare Parts Price List. Please contact Simon Aerials Parts Department for the latest edition of the Spare Parts Price List.

HOW TO USE THIS CATALOG

The Cover Page indicates the specific model or models covered by this Parts Catalog.

The "Table of Contents" pages list the specific sections, pages and page titles that are relevant to this model, and contained in this Catalog. Only those pages that refer specifically to the 2515 EX are included in this Catalog.

The "Primary Machine Component Groups" page illustrates the three major assemblies, along with their "Section" number.

The Parts Catalog is divided into "Sections", numbered from 1 through 99. Each section contains the individual parts that make up a major component, assembly or item. The first three sections (1, 4 and 5) contain the major assemblies, or "Primary Machine Component Groups". Sections that follow contain sub-assemblies or components of these "major" assemblies.

If a part number is followed by a plate number in the "SEE SECTION" column, refer to the plate indicated for a further breakdown of components for that part number. Items with indented descriptions are components of the non-indented item directly above.

When selecting parts for a specific machine, be sure to verify the machine model number, and serial number or date code (found on the data plate). When ordering parts, always give:

1. Model and Serial Number
2. Item Part Number and Description
3. Order Quantity

If a part number is not listed for a selected item, please provide this additional information:

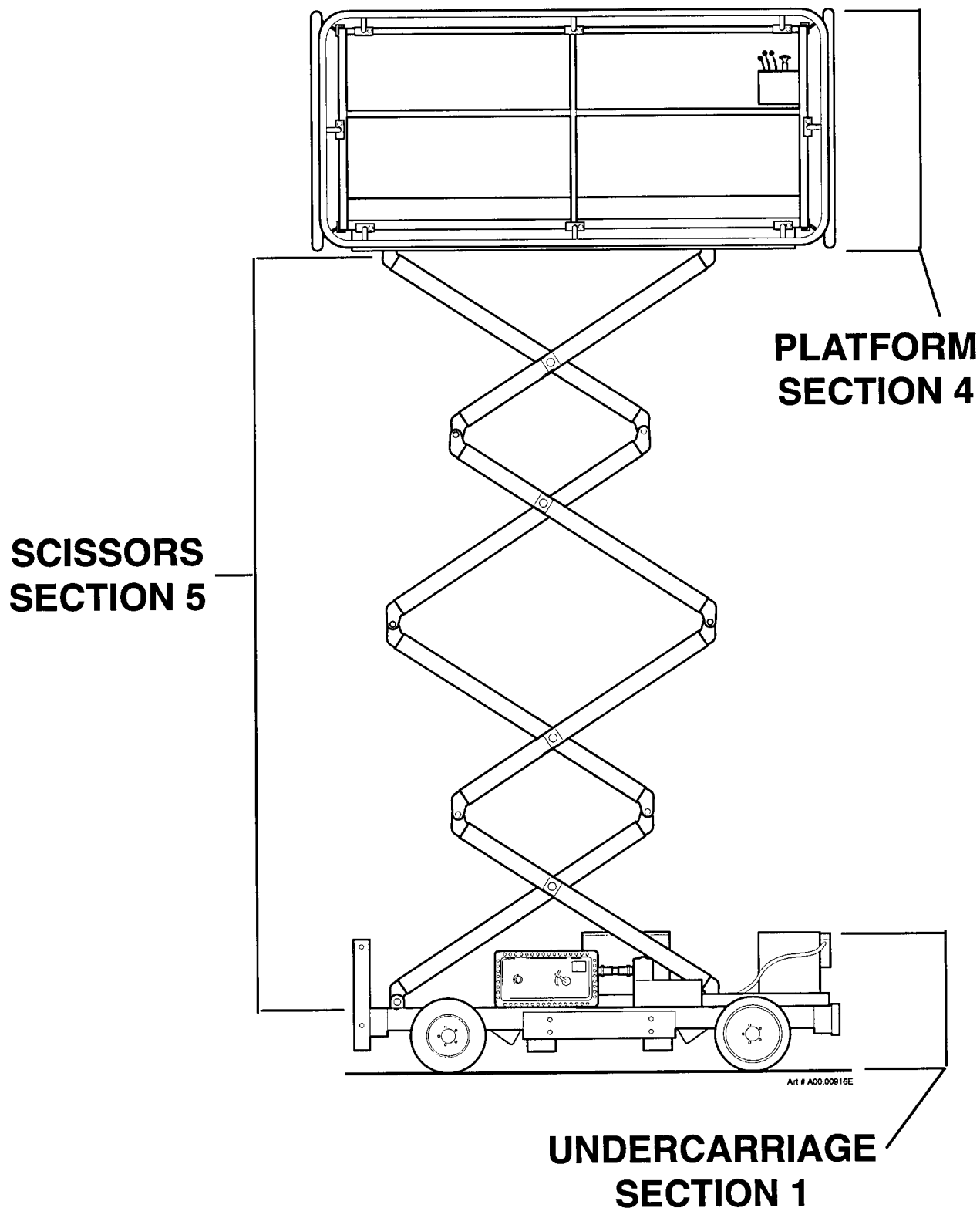
4. Parts Plate number, Item Number and Description of the desired item, OR
5. Part Number of the next assembly (Parent Part), if the desired item is not listed.

Some assembled items, such as hydraulic cylinders, may have been supplied by more than one source. While the assemblies may be able to be used interchangeably, FOR SAFETY'S SAKE, do not mix components or repair kits. Please confirm the make of the assembly on the unit before ordering or installing replacement parts.

Left and right-hand, front and rear should be determined as though you are standing on the Platform, with the steering wheels to the front. All dimensions are in inches unless otherwise specified.


SIMON AERIALS INC. reserves the right to change, improve, modify or expand features of its equipment. Therefore, specifications, models or equipment are subject to change without notice, and without incurring obligation to change, improve, modify or expand features of previously delivered units.

All SIMON AERIALS INC. manuals are periodically updated to reflect changes that occur in the equipment. Please contact Simon Aerials Technical Support Department with any questions you may have regarding your particular machine, or the availability of more recent manuals.



DESCRIPTION	PART NO.
PRIMARY MACHINE COMPONENT GROUPS	

PARTS LIST

ITEM	PART NO	SEE SECTION	DESCRIPTION	QTY.
			Note: Items marked "EX" MUST be replaced with IDENTICAL PARTS in order to maintain "EX" certification.	
			 DANGER	
			FAILURE TO USE APPROVED PARTS MAY CAUSE DEATH OR SERIOUS PERSONAL INJURY.	
1	50-100046		CHASSIS WELDMENT	1
2	02-104000		SPINDLE WELDMENT (Right)	1
3	02-103900		SPINDLE WELDMENT (Left)	1
4	42-800148		PIN, SPINDLE (King pin) (1" dia. x 9-1/4" long)	2
5	08-100200		BUSHING, SPINDLE PIN (Upper, flanged)	2
6	26-101049		BUSHING, SPINDLE PIN (Lower)	2
7	07-100000		ROLL PIN (5/16" x 2" long)	4
8	48-100907		HUB, WHEEL (front) (5 lug, marked "104643")	2
9	48-800143		STUD, WHEEL (front)	5
10	26-100908		CUP, BEARING (Inner)	1
11	26-800141		CUP, BEARING (Outer)	1
12	26-100913		CONE AND ROLLER, BEARING (Inner) (marked "LM48548")	2
13	34-800145		SEAL, GREASE	2
14	26-100914		CONE AND ROLLER, BEARING (Outer) (marked "LM67048")	2
15	22-800156		BEARING, SLEEVE (Outer cup)	2
16	14-800140		WASHER, FLAT	2
17	42-100919		PIN, COTTER	2
18	34-800137		CAP, DUST	2
19			WHEEL AND TIRE ASSEMBLY (Front)	2
20	02-107200		WHEEL (Front. 10" x 16")	1
21	02-107300	EX	TIRE (22" O.D., U.L approved "Static conductive" type)	1
22	12-100911		NUT, LUG (front)	10
23	221 8650		ROD, TIE (43-1/2" [1.1 M] long)	1
24	08-044400		END, TIE ROD	1
25	08-044500		END, TIE ROD	1
26	07-003133		CAP SCREW, HEX HEAD (5/8"-11 x 3", Grade 5)	2
27	07-050021		NUT, LOCK (5/8"-11, Grade 5)	2
28	04-027700		CYLINDER, STEER (1-1/2" bore, 6" stroke)	1
29	04-027701		SEAL KIT, STEER CYLINDER	1
30	01-205900		RESTRICTOR (.047" [1.19 mm] orifice)	2
31			ELBOW	1
32			ADAPTER	1
33	42-800124		PIN, STEER CYLINDER (Base end)	2
34	42-800125		PIN, COTTER (3/32" x 2")	2

TITLE UNDERCARRIAGE ASSEMBLY, 2515 EX SCISSORS (PLATE 1 OF 7)

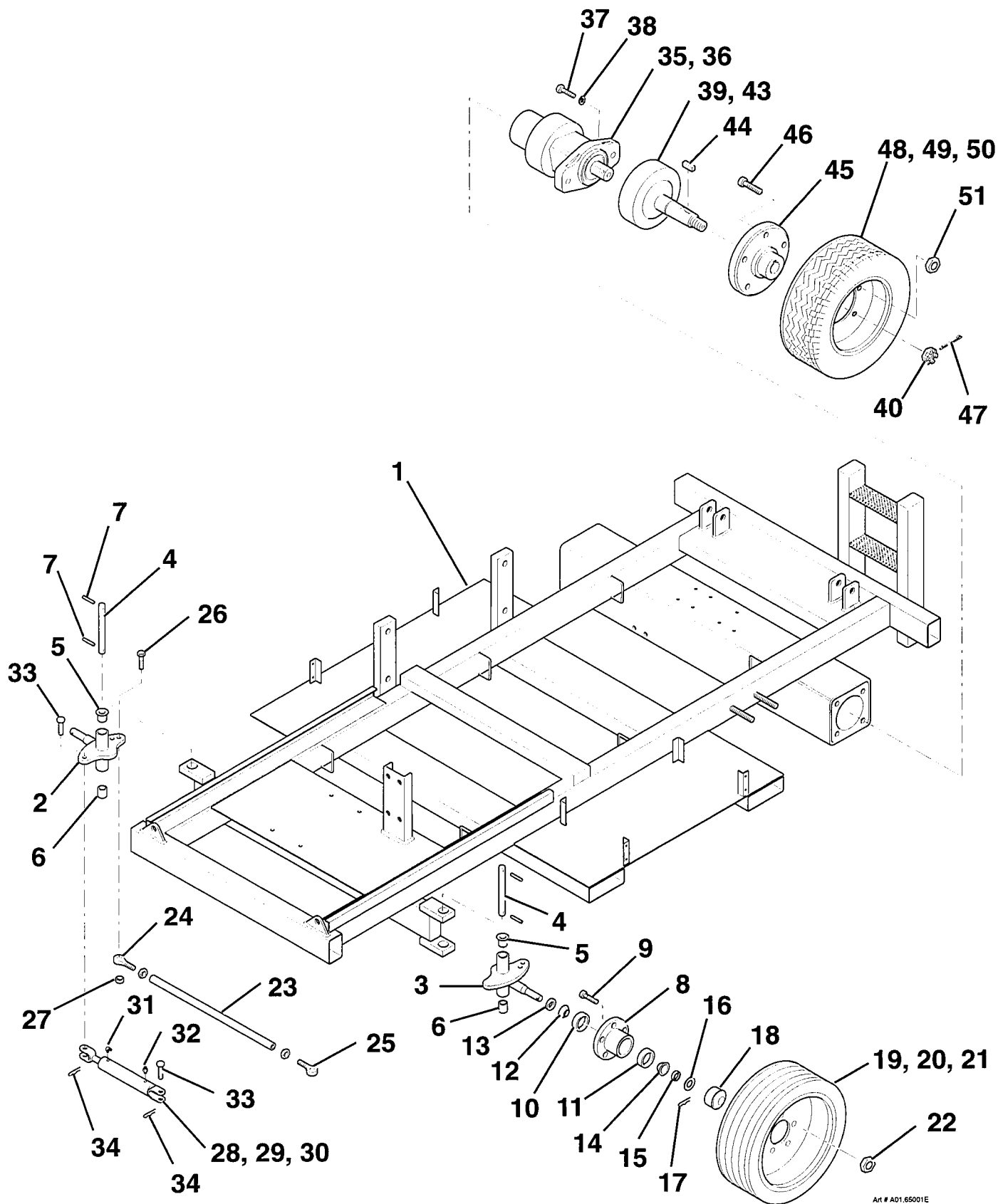
PLATE NO.

01.65

SIMON AERIALS INC.

REV. 28 JAN., 1996

PART NO.



Art # A01.65001E

TITLE UNDERCARRIAGE ASSEMBLY, 2515 EX SCISSORS (PLATE 1 OF 7)

SIMON AERIALS INC.

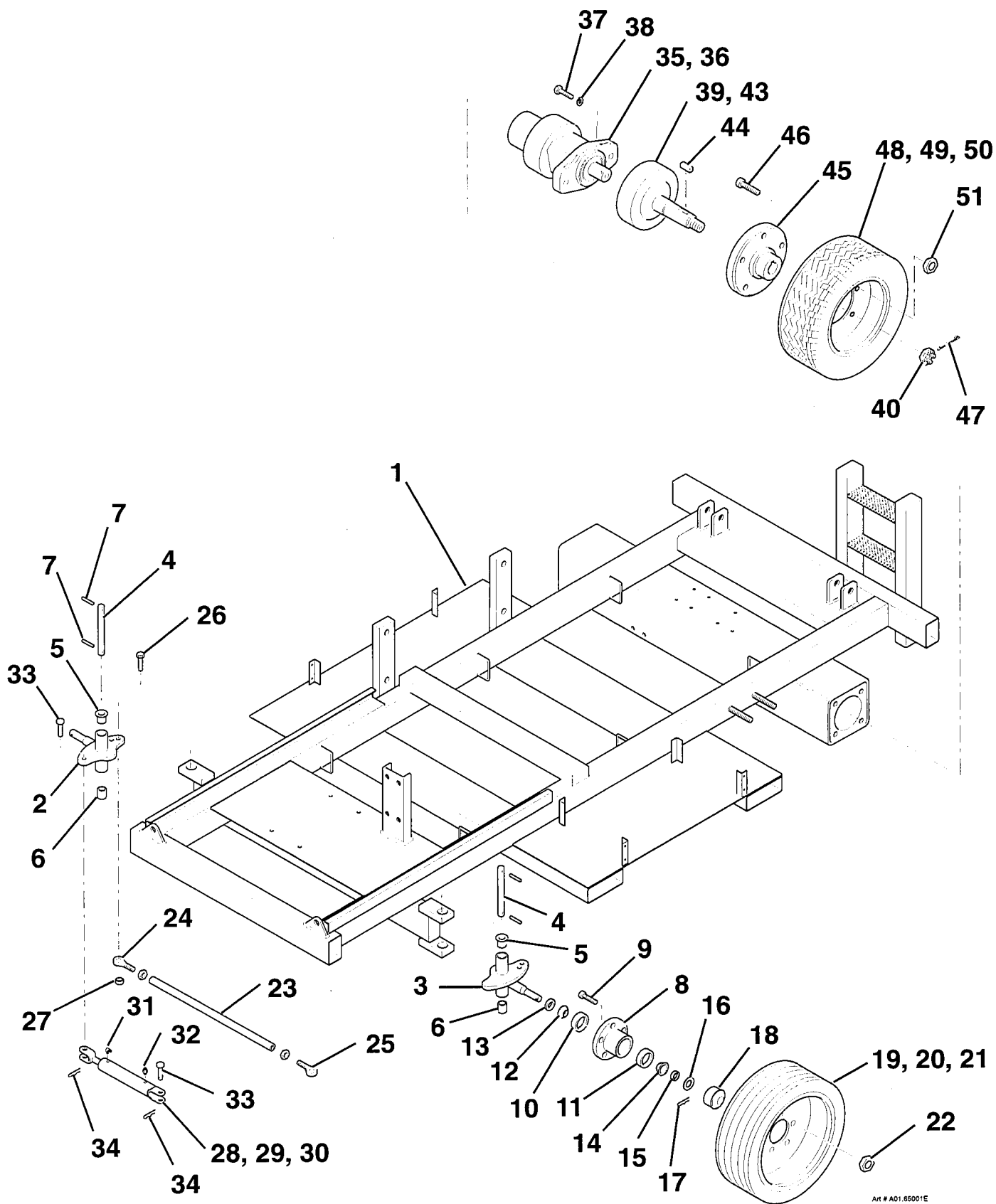
REV. 28 JAN., 1996

PART
NO.

PLATE
NO.

01.65

[illegible]PART
NO.



Art # A01.65001E

TITLE UNDERCARRIAGE ASSEMBLY, 2515 EX SCISSORS (PLATE 2 OF 7)

SIMON AERIALS INC.


REV. 28 JAN., 1996

PART
NO.

PLATE
NO.

01.65

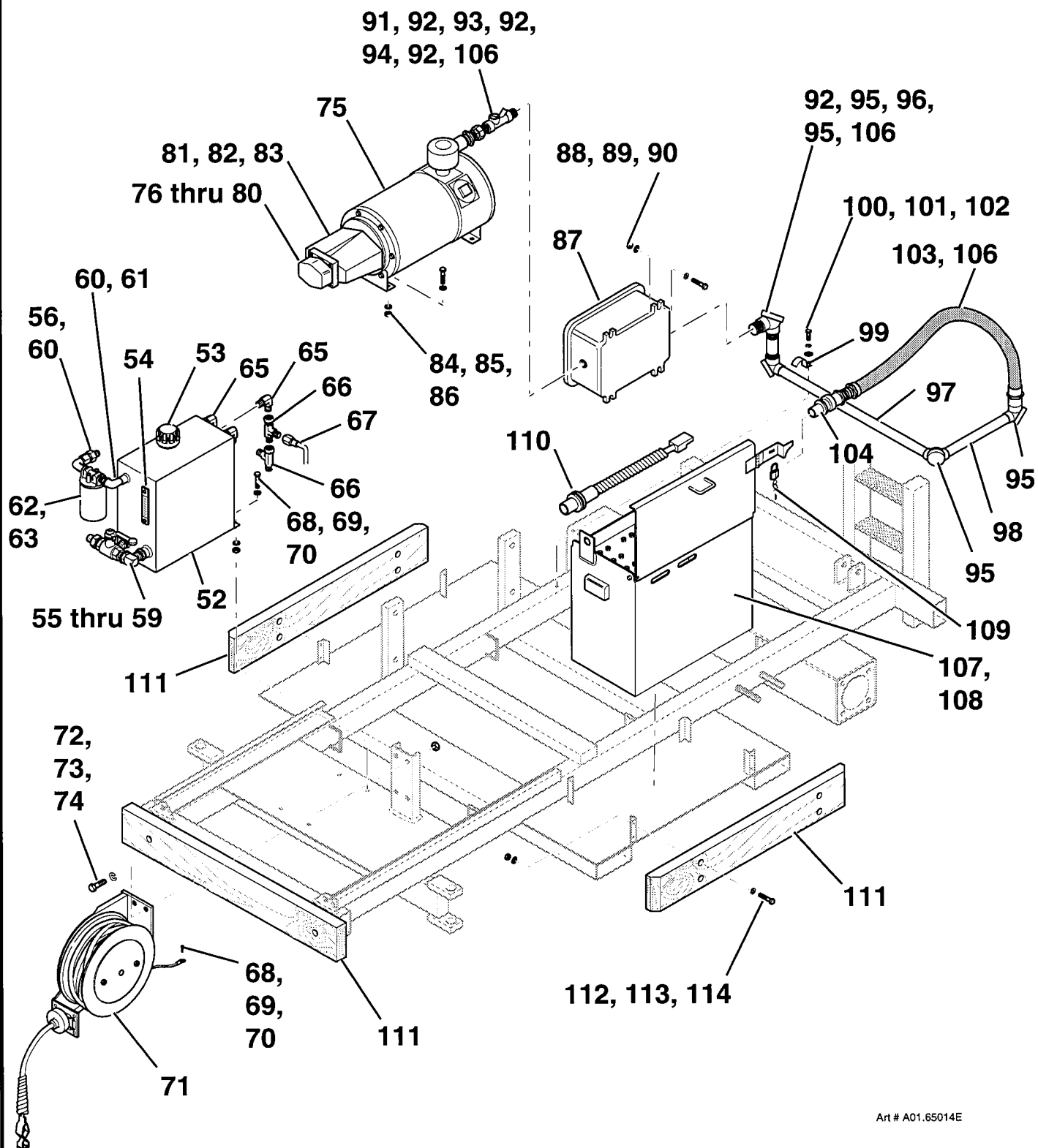
PARTS LIST

ITEM	PART NO	SEE SECTION	DESCRIPTION	QTY.
			Note: Items marked "EX" MUST be replaced with IDENTICAL PARTS in order to maintain "EX" certification.	
			 DANGER	
			FAILURE TO USE APPROVED PARTS MAY CAUSE DEATH OR SERIOUS PERSONAL INJURY.	
52	50-800104		TANK, HYDRAULIC (8 Gal [30 L] capacity)	1
53	01-101000		CAP, HYDRAULIC TANK	1
54	01-074100		GAUGE, SIGHT	1
55	24-700262		STRAINER, SUCTION (10 Gal [38 L]/ Min, 100 media)	1
56	24-100538		ADAPTER	2
57	06-300600		90° ELBOW, MALE (8-8)	1
58	01-002800		VALVE, SHUTOFF (1/2" NPT)	1
59	24-100776		CONNECTOR	1
60	24-100562		ELBOW	2
61	24-100506		NIPPLE	1
62	01-081500		FILTER, BYPASS	1
63	01-081501		ELEMENT, FILTER, (Spin-on, 10 Micron)	1
64			PLUG, SQUARE	2
65			ELBOW	3
66	06-054500		RUN TEE, 37° FEMALE SWIVEL NUT (6 R6X-S)	2
67	353 1890		HOSE ASSEMBLY, HYDRAULIC (6M3K-6FJX-6FJX90S, 107" [2.72 M] long)	1
68	07-003025		CAP SCREW, HEX HEAD (5/16"-18 x 1", Grade 5)	4
69	07-062015		WASHER, FLAT (5/16")	8
70	07-050015		NUT, LOCK (5/16"-18, Grade 5, Nylock)	4
71	03-617900	EX	WIRE ASSEMBLY, GROUNDING (Retractable reel)	1
72	07-003027		CAP SCREW, HEX HEAD (5/16"-18 x 1-1/2", Grade 5)	4
73	07-062015		WASHER, FLAT (5/16")	4
74	07-050015		NUT, LOCK (5/16"-18, Grade 5, Nylock)	4
75	03-609300	EX	MOTOR, ELECTRIC (24 Volt DC, 160 Amp, rated 4 HP [2.98 Kw] @ 2700 RPM)	1
76	01-079700		PUMP, HYDRAULIC (.32 in ³ [5.24 c.c.]/ rev.)	1
77	06-045200		90° ELBOW, "O"-RING TO 37° (10 C5OX-S)	1
78	06-044800		90° ELBOW, "O"-RING TO 37° (8 C5OX-S)	1
79	07-003025		CAP SCREW, HEX HEAD (5/16"-18 x 1", Grade 5)	4
80	07-065015		WASHER, HELICAL LOCK (5/16")	4

TITLE UNDERCARRIAGE ASSEMBLY, 2515 EX SCISSORS (PLATE 3 OF 7)

PLATE NO. 01.65	SIMON AERIALS INC.	PART NO.
-----------------	---------------------------	----------

REV. 28 JAN., 1996



Art # A01.65014E

TITLE UNDERCARRIAGE ASSEMBLY, 2515 EX SCISSORS (PLATE 3 OF 7)

SIMON AERIALS INC.


REV. 28 JAN., 1996

PART
NO.

PLATE
NO.

01.65

PARTS LIST

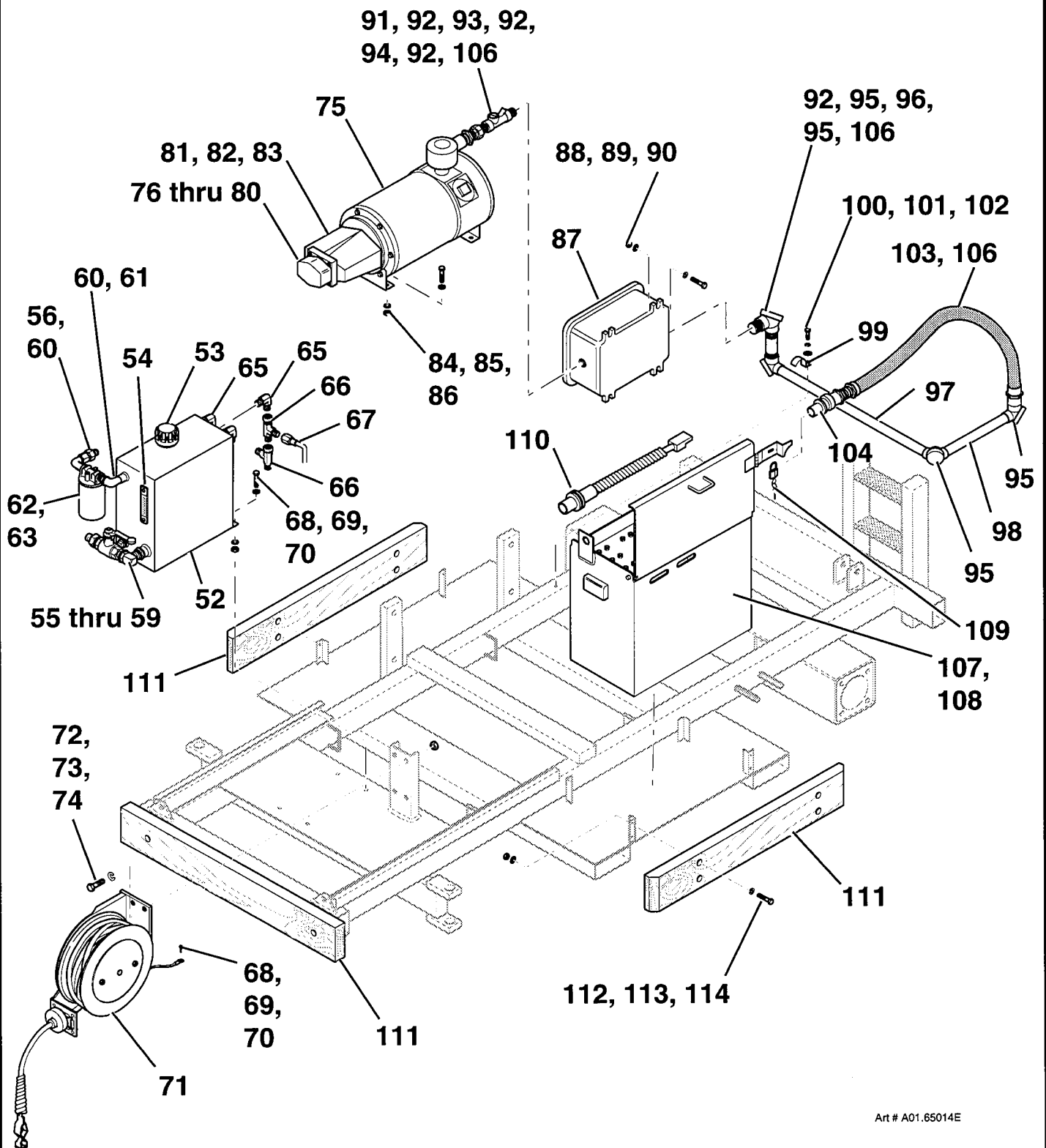
ITEM	PART NO	SEE SECTION	DESCRIPTION	QTY.
			Note: Items marked "EX" MUST be replaced with IDENTICAL PARTS in order to maintain "EX" certification.	
			 DANGER	
			FAILURE TO USE APPROVED PARTS MAY CAUSE DEATH OR SERIOUS PERSONAL INJURY.	
81	02-106900		ADAPTER, PUMP TO MOTOR	
82	07-003045		CAP SCREW, HEX HEAD (3/8"-16 x 1", Grade 5)	4
83	07-065016		WASHER, HELICAL LOCK (3/8")	4
84	07-003046		CAP SCREW, HEX HEAD (3/8"-16 x 1-1/4", Grade 5)	4
85	07-060016		WASHER, FLAT (3/8" SAE)	8
86	07-050016		NUT, LOCK (3/8"-16, Grade 5)	4
87	See Plate . .	07.62	EX CONTROL BOX ASSEMBLY, GROUND ELECTRICAL	1
88	07-003096		CAP SCREW, HEX HEAD (1/2"-13 x 3-3/4")	4
89	07-062018		WASHER, FLAT (1/2")	8
90	07-050018		NUT, LOCK (1/2"-13, Grade 5)	4
91	11-200500	EX	REDUCER, PIPE (2" to 1-1/4")	1
92	11-204900	EX	NIPPLE, CLOSE (1-1/4")	4
93	03-616400	EX	UNION, ELECTRICAL (1-1/4" "Red Dot") (EXFU-4)	1
94	03-615900	EX	COUPLING, ELECTRICAL (1-1/4" "Red Dot") (EVHF-4)	1
95	03-616200	EX	90° ELBOW, ELECTRICAL (1-1/4" "Red Dot")	4
96	11-200900	EX	NIPPLE (1-1/4" x 6", Galvanized)	1
97	222 8130	EX	PIPE (1-1/4" x 42-1/2" long, Galvanized)	1
98	222 8120	EX	PIPE (1-1/4" x 17" long, Galvanized)	1
99	03-616300		STRAP, CONDUIT (1-1/4")	2
100	07-003045		CAP SCREW, HEX HEAD (3/8"-16 x 1", Grade 5)	2
101	07-065016		WASHER, HELICAL LOCK (3/8")	2
102	07-060016		WASHER, FLAT (3/8" SAE)	2
103	03-618700	EX	COUPLING, FLEXIBLE (1-1/4" x 36" [.91 M] long)	1
104	03-618600	EX	SHELL, PLUG	1
105	Call Simon	EX	WIRE, ELECTRICAL	
106	03-616500	EX	COMPOUND, SEALING ("Chico" compound. Required for electrical fittings) (16 Oz [.498 Kg] container)	A.R.

TITLE UNDERCARRIAGE ASSEMBLY, 2515 EX SCISSORS (PLATE 4 OF 7)

PLATE NO. 01.65 **SIMON AERIALS INC.**

REV. 28 JAN., 1996

PART NO.



Art # A01.65014E

TITLE UNDERCARRIAGE ASSEMBLY, 2515 EX SCISSORS (PLATE 4 OF 7)

SIMON AERIALS INC.

REV. 28 JAN., 1996

PART
NO.

PLATE
NO.

01.65

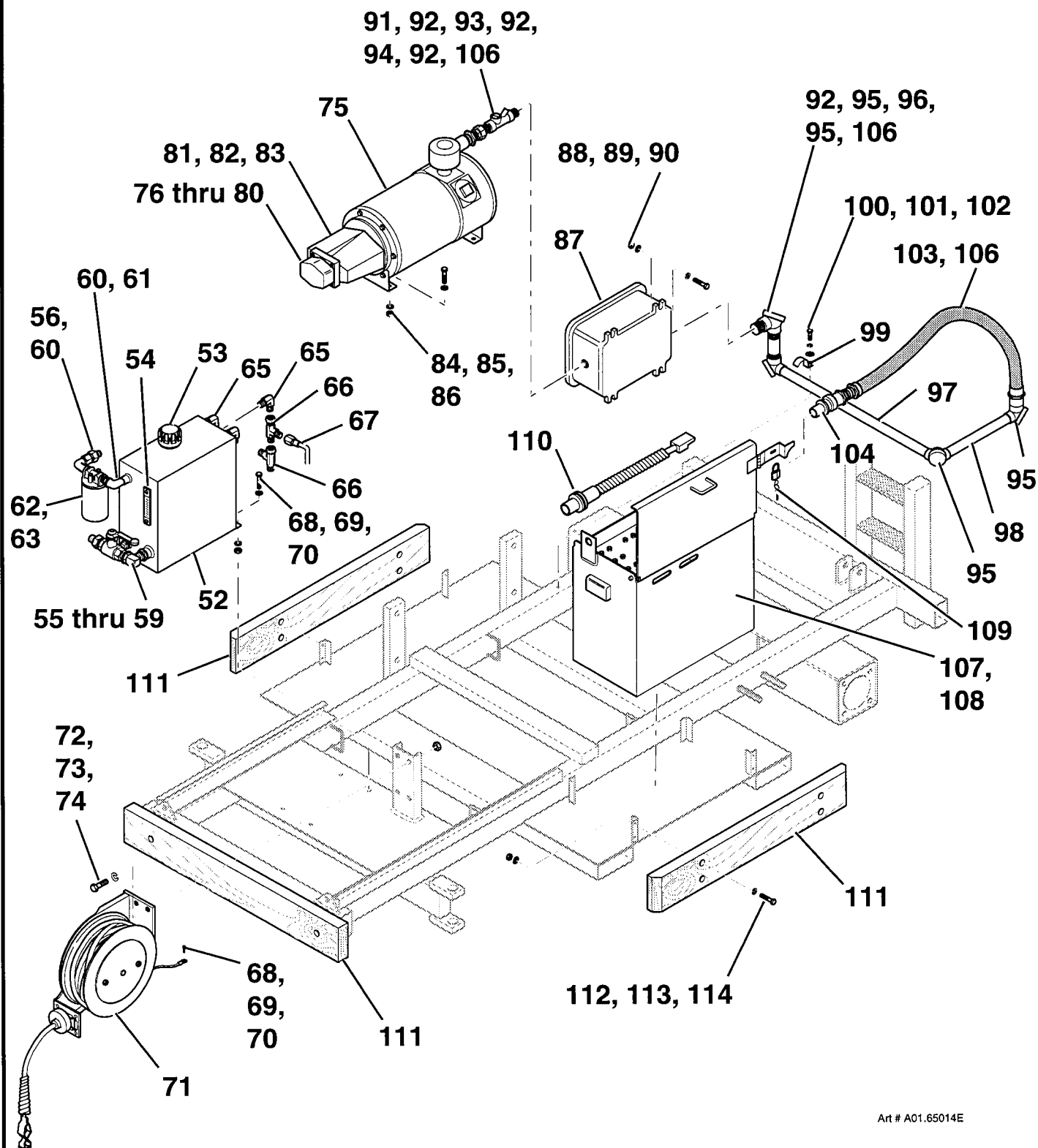
PARTS LIST

[illegible]

TITLE	UNDERCARRIAGE ASSEMBLY, 2515 EX SCISSORS (PLATE 5 OF 7)
-------	---

PLATE NO.	01.65	SIMON AERIALS INC.	REV. 28 JAN., 1996	PART NO.
-----------	-------	--------------------	--------------------	----------

PART NO.



Art # A01.65014E

TITLE UNDERCARRIAGE ASSEMBLY, 2515 EX SCISSORS (PLATE 5 OF 7)

SIMON AERIALS INC.

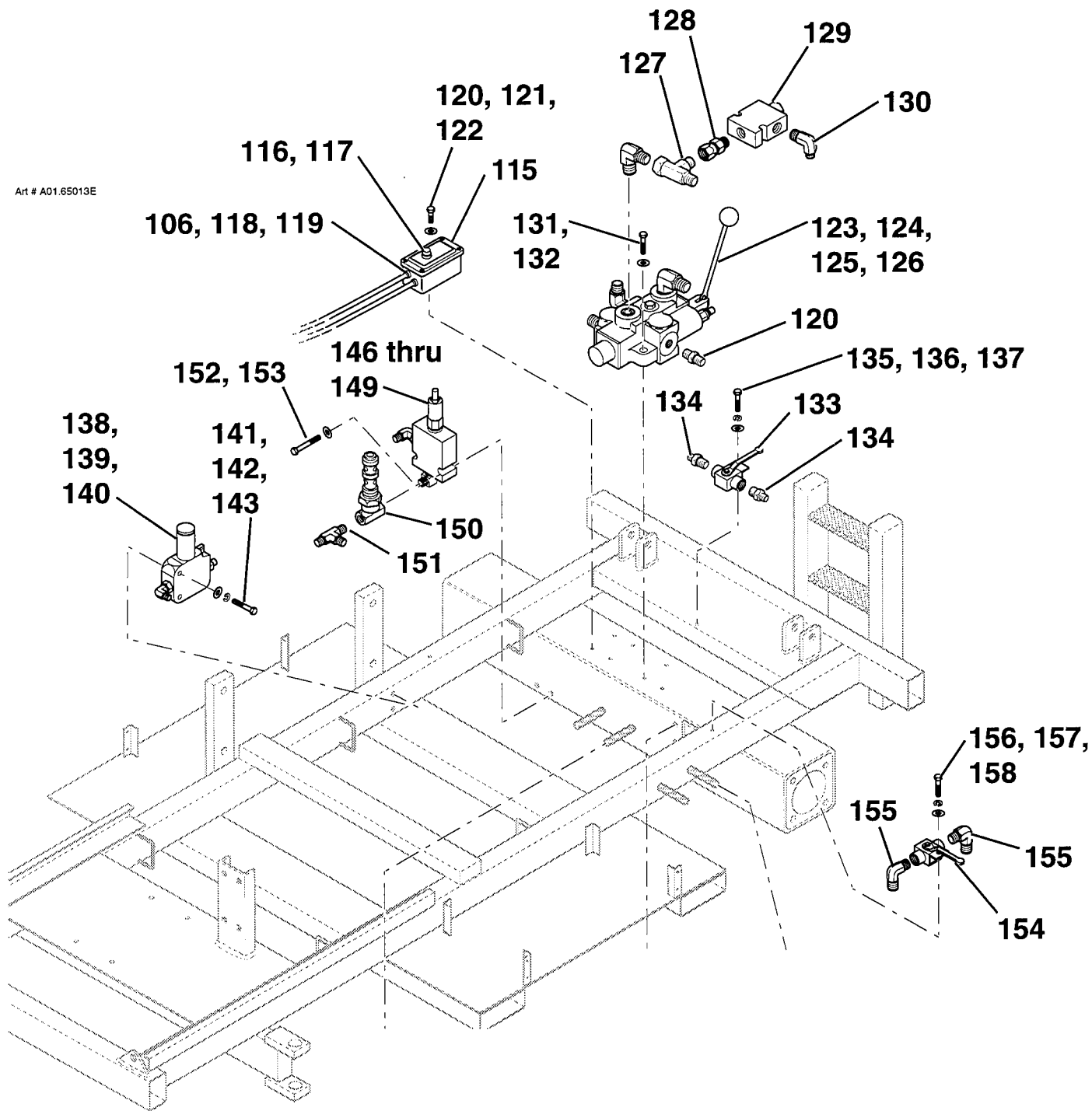
REV. 28 JAN., 1996

PART
NO.

PLATE
NO. 01.65

PARTS LIST				
ITEM	PART NO	SEE SECTION	DESCRIPTION	QTY.
115	03-406100		BOX, ELECTRICAL CONTROL (Fiberglass, undrilled)	1
116	03-020300		SWITCH, PUSH BUTTON	1
117	03-020302		BUTTON, SWITCH (Red)	1
118	03-045500		GRIP, CORD (1/2", with .31" to .38" seal)	2
119	11-203200		NIPPLE, PIPE (1/2" x 1-1/8")	2
120	07-003015		CAP SCREW, HEX HEAD (1/4"-20 x 3-1/2", Grade 5)	2
121	07-062014		WASHER, FLAT (1/4")	2
122	07-050014		NUT, LOCK (1/4"-20, Grade 5)	2
123	01-111300		VALVE (3 position, 4 way) (Lift/ Lower)	1
124	06-001300		CONNECTOR, MALE 37° TO NPT (8-8 FTX-S)	2
125	06-004400		90° ELBOW, MALE 37° TO NPT (8-8 CTX-S)	2
126	06-307500		90° ELBOW (8MJ - 12MP)	1
127	06-054500		RUN TEE, 37° FEMALE SWIVEL NUT (6 R6X-S)	1
128	06-079000		CONNECTOR, SWIVEL NUT (6 F65OX-S)	1
129	01-239600		VALVE, FLOW CONTROL (Pressure compensated)	1
130	06-047000		45° ELBOW, "O"-RING TO 37° (6 V5OX-S)	1
131	07-003027		CAP SCREW, HEX HEAD (5/16"-18 x 1-1/2", Grade 5)	3
132	07-062015		WASHER, FLAT (5/16")	3
133	222 0160		VALVE, MANUAL LOWERING	1
134	06-000600		CONNECTOR, MALE 37° TO NPT (4-6 FTX-S)	2
135	07-003025		CAP SCREW, HEX HEAD (5/16"-18 x 1", Grade 5)	1
136	07-065015		WASHER, HELICAL LOCK (5/16")	1
137	07-062015		WASHER, FLAT (5/16")	1
138	01-111200		SWITCH (2 position, 3 way, spring offset)	1
139	06-001000		CONNECTOR, MALE 37° TO NPT (6-8 FTX-S)	1
140	06-004100		90° ELBOW, MALE 37° TO NPT (6-8 CTX-S)	1
141	07-003030		CAP SCREW, HEX HEAD (5/16"-18 x 2-1/4", Grade 5)	2
142	07-065015		WASHER, HELICAL LOCK (5/16")	2
143	07-062015		WASHER, FLAT (5/16")	2
144	07-003083		CAP SCREW, HEX HEAD (1/2"-13 x 3/4", Grade 5)	
			(For switch actuation. Mounted on scissor arm)	1
145	07-040018		NUT, HEX (1/2"-13, Grade 5)	1
146	01-111600		VALVE MODULE, RELIEF	1
147	Call Simon		CARTRIDGE, RELIEF VALVE	1
148	Call Simon		SEAL KIT, RELIEF VALVE	1
149	24-100741		ELBOW (6MP - 8MJ)	2
150	24-100842		TEST PORT, DIAGNOSTIC	1
151	06-048600		RUN TEE, MALE "O"-RING TO 37° (8 R5OX-S)	1
152	07-003009		CAP SCREW, HEX HEAD (1/4"-20 x 2", Grade 5)	2
153	07-060014		WASHER, FLAT (1/4", SAE)	2
TITLE UNDERCARRIAGE ASSEMBLY, 2515 EX SCISSORS (PLATE 6 OF 7)				
PLATE NO. 01.65		SIMON AERIALS INC.		PART NO.
REV. 28 JAN., 1996				

Art # A01.65013E



TITLE UNDERCARRIAGE ASSEMBLY, 2515 EX SCISSORS (PLATE 6 OF 7)

SIMON AERIALS INC.

REV. 28 JAN., 1996

**PART
NO.**

**PLATE
NO.**

01.65

PARTS LIST

ITEM	PART NO	SEE SECTION	DESCRIPTION	QTY.
154	222 0160		VALVE, MOTOR RELEASE (Free wheel valve)	1
155	06-000600		CONNECTOR, MALE 37° TO NPT (4-6 FTX-S)	2
156	07-003025		CAP SCREW, HEX HEAD (5/16"-18 x 1", Grade 5)	1
157	07-065015		WASHER, HELICAL LOCK (5/16")	1
158	07-062015		WASHER, FLAT (5/16")	1
159	01-209800		MANIFOLD, BRAKE RELEASE	1
160			BODY, VALVE	1
161	01-209801		VALVE, NEEDLE	1
162			PUMP, HAND	1
163	01-209802		SEAL KIT, HAND PUMP	1
164	06-039500		ADAPTER, "O"-RING TO 37° (4-6 F5OX-S)	1
165	06-004400		90° ELBOW, MALE 37° TO NPT (8-8 CTX-S)	1
166	07-050015		NUT, LOCK (5/16"-18, Grade 5, Nylock)	2
167	07-062015		WASHER, FLAT (5/16")	2
168	01-202800		VALVE, DUAL COUNTERBALANCE (with shuttle valve) (Factory set to 2000 PSI [138 bar] [140.6 Kg/ cm ²])	1
169	06-072900		TEE, FEMALE PIPE (1/2 MMO-S)	1
170	24-100786		ELBOW (8MP - 4MJ)	1
171	06-045000		90° ELBOW, "O"-RING TO 37° (8-10 C5OX-S)	2
172	07-050015		NUT, LOCK (5/16"-18, Grade 5)	2
173	07-062015		WASHER, FLAT (5/16")	2
174	01-012800		VALVE, PRESSURE REDUCING (Brake)	1
175	01-102300		CARTRIDGE, RELIEF	1
176	06-004000		90° ELBOW, MALE 37° TO NPT (6-6 CTX-S)	1
177	06-082600		90° ELBOW, MALE PIPE THREAD (3/8 CR-S)	1
178	16-700231		REGULATOR, FLOW (One way) (Lift and brake)	1
179	06-072800		TEE, FEMALE PIPE (3/8 MMO-S)	1
180	24-100842		TEST PORT, DIAGNOSTIC	1
181	06-000600		CONNECTOR, MALE 37° TO NPT (4-6 FTX-S)	1
182	16-800453		VALVE, CHECK (Pilot operated)	1
183	07-003030		CAP SCREW, HEX HEAD (5/16"-18 x 2-1/4", Grade 5)	2
184	07-062015		WASHER, FLAT (5/16")	2
185	24-100775		ADAPTER (6MP - 6MP)	3
186	06-072800		TEE, FEMALE PIPE (3/8 MMO-S)	2
187	06-082600		90° ELBOW, MALE PIPE THREAD (3/8 CR-S)	2
188	06-039800		ADAPTER, "O"-RING TO 37° (6 F5OX-S)	4
189	06-303000		CROSS, FEMALE PIPE (3/8 KMMOO)	2
190	24-100801		ELBOW (6MP - 6FP)	1
191	01-103700		VALVE BODY (Pressure relief)	2
192	01-111600		CARTRIDGE, PRESSURE RELIEF VALVE	1
193	06-050000		BRANCH TEE, MALE "O"-RING TO 37° (6 S5OX-S)	1

TITLE UNDERCARRIAGE ASSEMBLY, 2515 EX SCISSORS (PLATE 7 OF 7)

PLATE NO. 01.65 **SIMON AERIALS INC.**

REV. 28 JAN., 1996

PART NO.

PARTS LIST

ITEM	PART NO	SEE SECTION	DESCRIPTION	QTY.
1	221 7330		PLATFORM DECK WELDMENT (5 Ft x 10 Ft [1.52 M x 3.05 M], with traversing deck option)	1
2	221 7340		PLATFORM BASE WELDMENT (for traversing deck)	1
3	231 4200		ROLLER, TRAVERSING DECK	4
4	08-101600		BUSHING (Bronze, 1-1/8" O.D., 7/8" I.D., 1" long)	4
5	222 4760		SIDE RAIL WELDMENT (Right)	1
6	221 7500		SIDE RAIL WELDMENT (Left)	1
7	221 7490		END RAIL WELDMENT (Control end)	1
8	221 7480		END RAIL WELDMENT (Entry end)	1
9	10-211000		LATCH, GATE (welded to end rail)	1
10	No Part #		KNOB, GATE LATCH	1
11			CAP SCREW, HEX HEAD	1
12			WASHER, HELICAL LOCK	1
13	07-003032		CAP SCREW, HEX HEAD (5/16"-18 x 2-3/4", Grade 5)	10
14	07-050015		NUT, LOCK (5/16"-18, Grade 5)	10
15	221 8060		GATE WELDMENT, ENTRY	1
16	07-003029		CAP SCREW, HEX HEAD (5/16"-18 x 2", Grade 5)	4
17	07-050015		NUT, LOCK (5/16"-18, Grade 5)	4
18	223 0100		ROD, LATCH (Delrin rod, 3/8" dia. x 4" [102 mm] long)	1
19	07-023020		SET SCREW, HEX SOCKET (5/16"-18 x 1/4", Grade 5)	1
20	10-138500		BUMPER (Rubber, recessed, 1" dia. x .53" high)	2
21	07-102300		SCREW, HEX HEAD (#10-24 x 1/2", self-tapping)	1
22	07-008350		CAP SCREW, SOCKET HEAD (#10-24 x 1/2", Grade 8)	1
23	223 0110		PAD, CUSHION (Rubber, 1/8" thick, cut to fit)	A.R.
24	07-103800		PLUG (Black plastic, for #14 Ga. 1-1/4" square tube)	4
25	See plate . .	09. - -	CONSOLE ASSEMBLY, PLATFORM CONTROL	1
26	07-003029		CAP SCREW, HEX HEAD (5/16"-18 x 2", Grade 5)	4
27	07-062015		WASHER, FLAT (5/16")	8
28	07-050015		NUT, LOCK (5/16"-18, Grade 5)	4
29	03-700700		SWITCH, FOOT OPERATED	1
30	03-465602		MICROSWITCH	1
31	03-041700		GRIP, CORD (3/8", with .31" to .38" seal)	2
32	03-055700		NUT, CONDUIT LOCK (3/8")	2
33	03-085200		CABLE, ELECTRICAL (SJO, 2 conductor, #16 AWG) (Bulk item, order as needed.)	A.R.

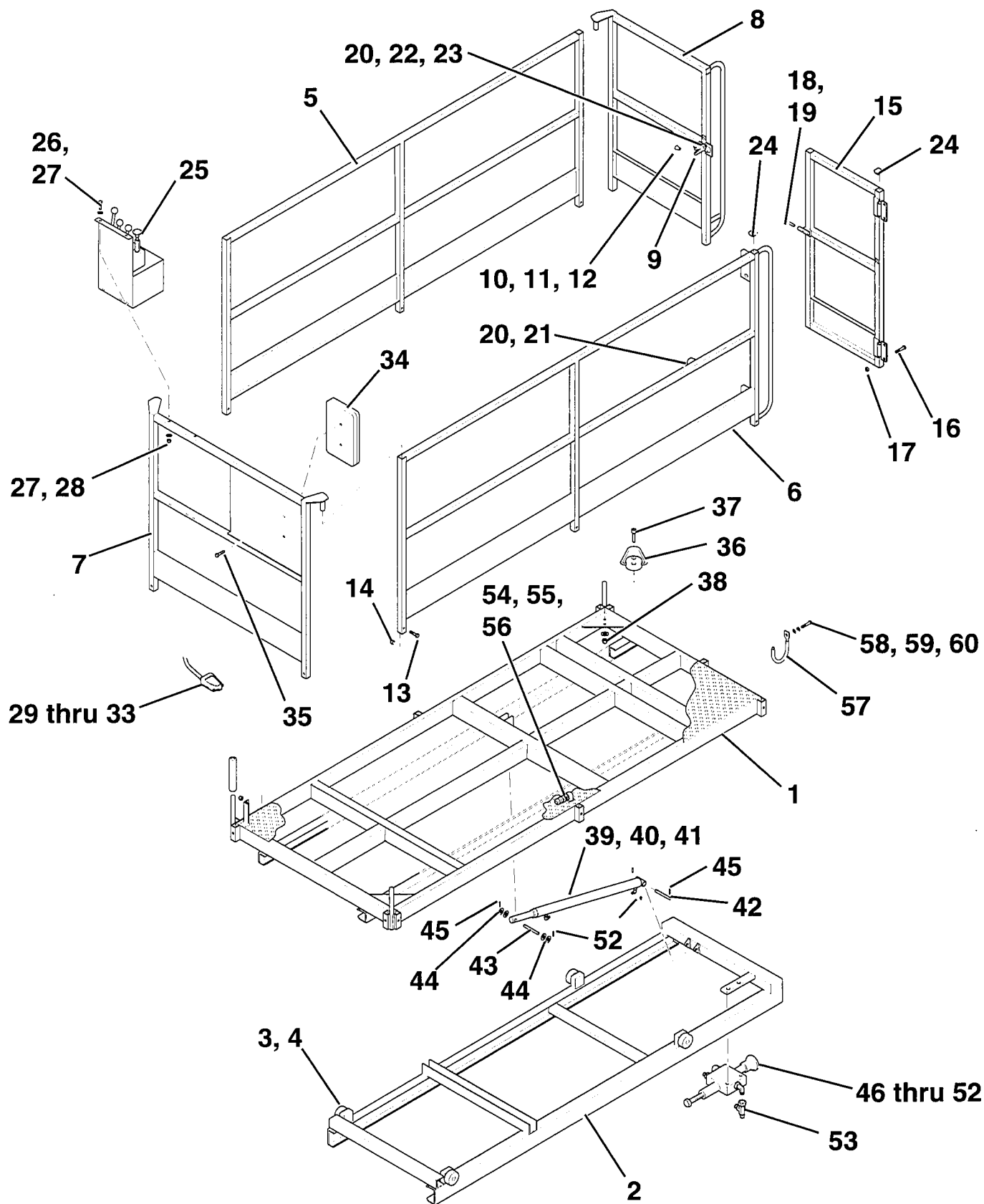
TITLE PLATFORM ASSEMBLY (TRAVERSING DECK), 2515 SCISSORS (1 OF 2)

PLATE NO. 04.69

SIMON AERIALS INC.

REV. 28 JAN., 1996

PART NO.



Alt # A04.6R002E

TITLE PLATFORM ASSEMBLY (TRAVERSING DECK), 2515 SCISSORS (1 OF 2)

SIMON AERIALS INC.

REV. 28 JAN., 1996

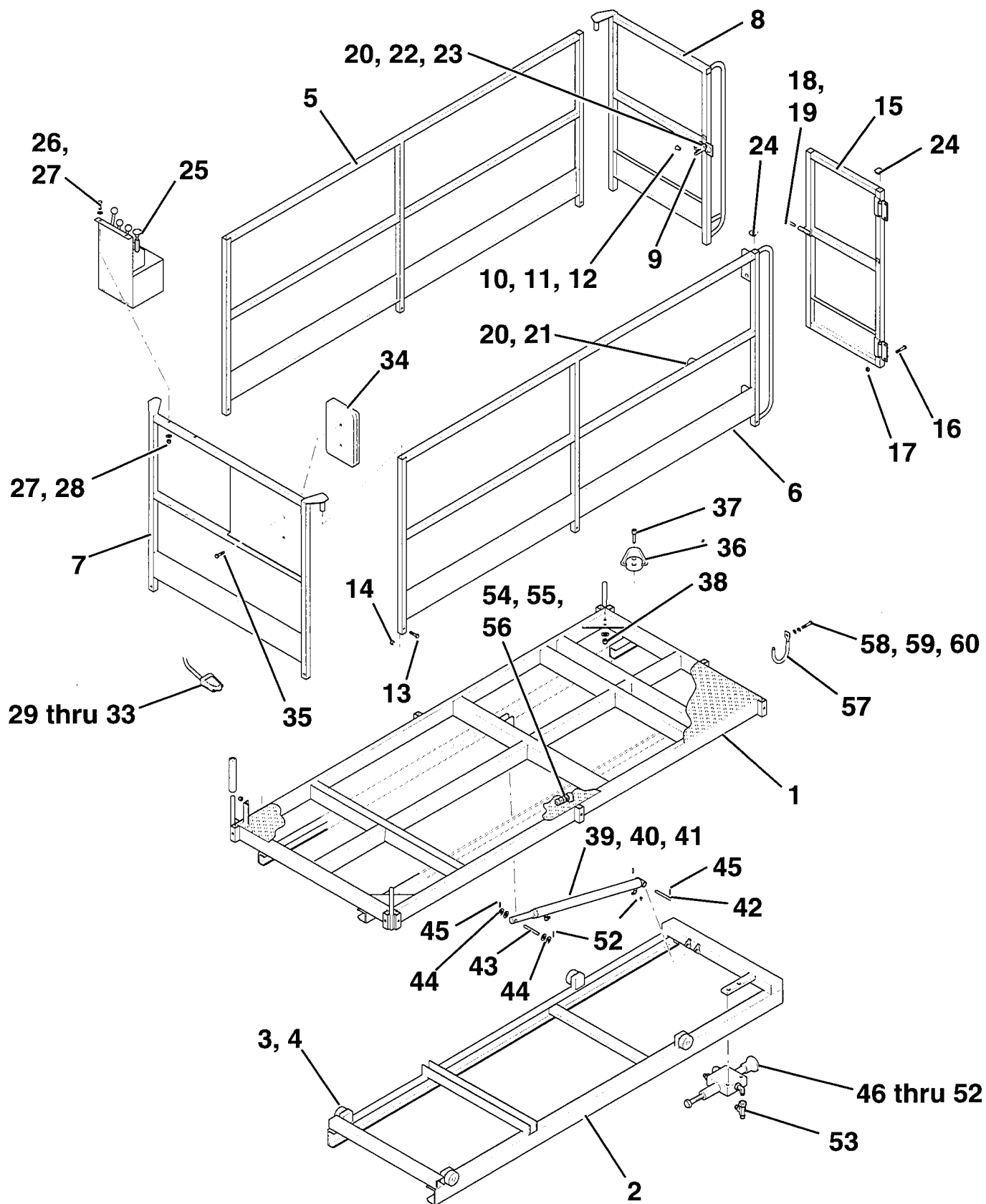
PART
NO.

PLATE
NO. 04.69

[illegible]

TITLE PLATFORM ASSEMBLY (TRAVERSING DECK), 2515 SCISSORS (2 OF 2)			
PLATE NO.	04.69	SIMON AERIALS INC. REV. 28 JAN., 1996	PART NO.

PART
NO.



Art # ADA 68002E

TITLE PLATFORM ASSEMBLY (TRAVERSING DECK), 2515 SCISSORS (2 OF 2)

SIMON AERIALS INC.

REV. 28 JAN., 1996

PART
NO.

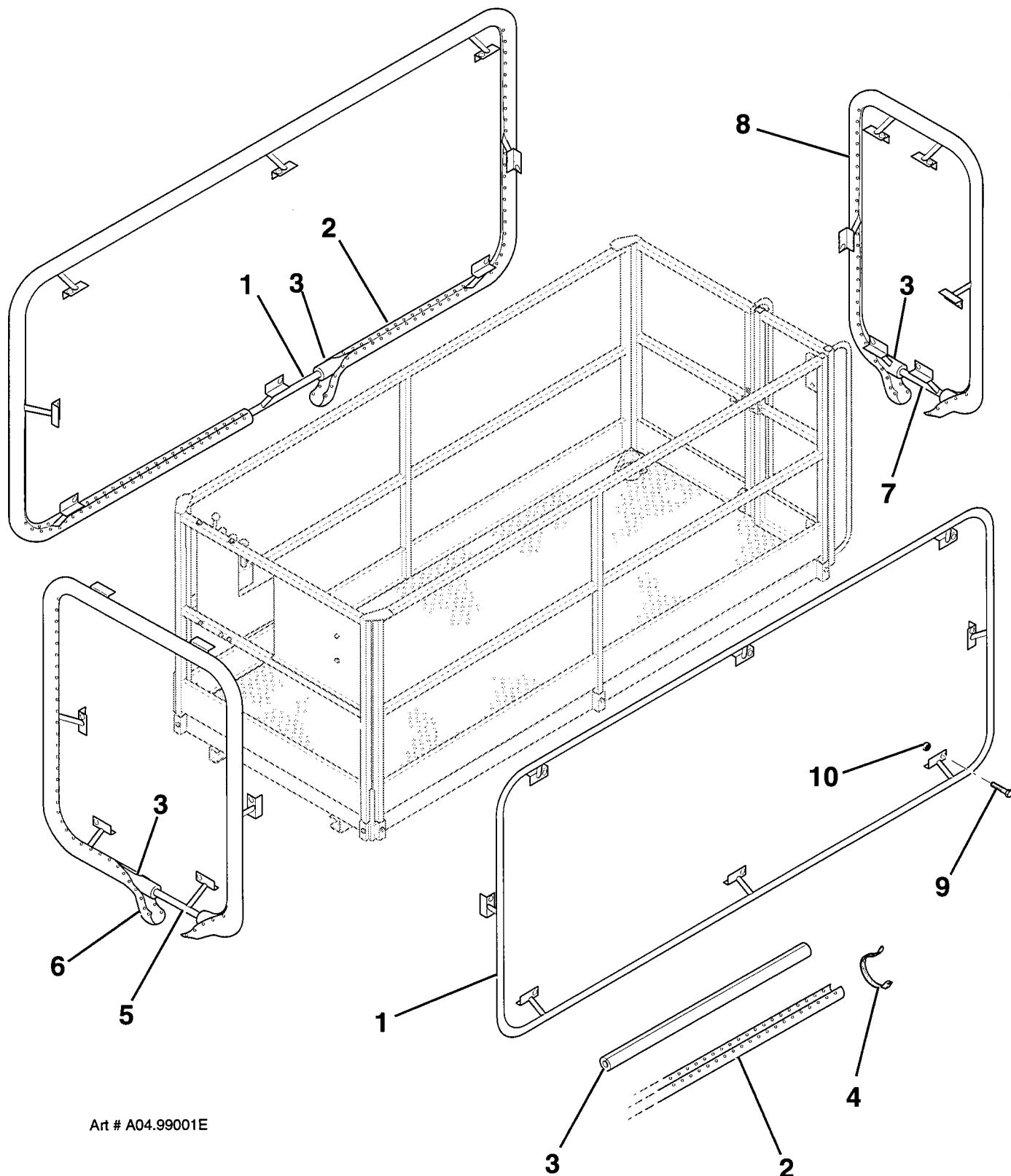
PLATE
NO. 04.69

[illegible]

04.99

NEW 09 NOV., 1994

PART
NO.



TITLE

PADDED BUMPER RAIL OPTION, 2515 SCISSORS

SIMON AERIALS INC.

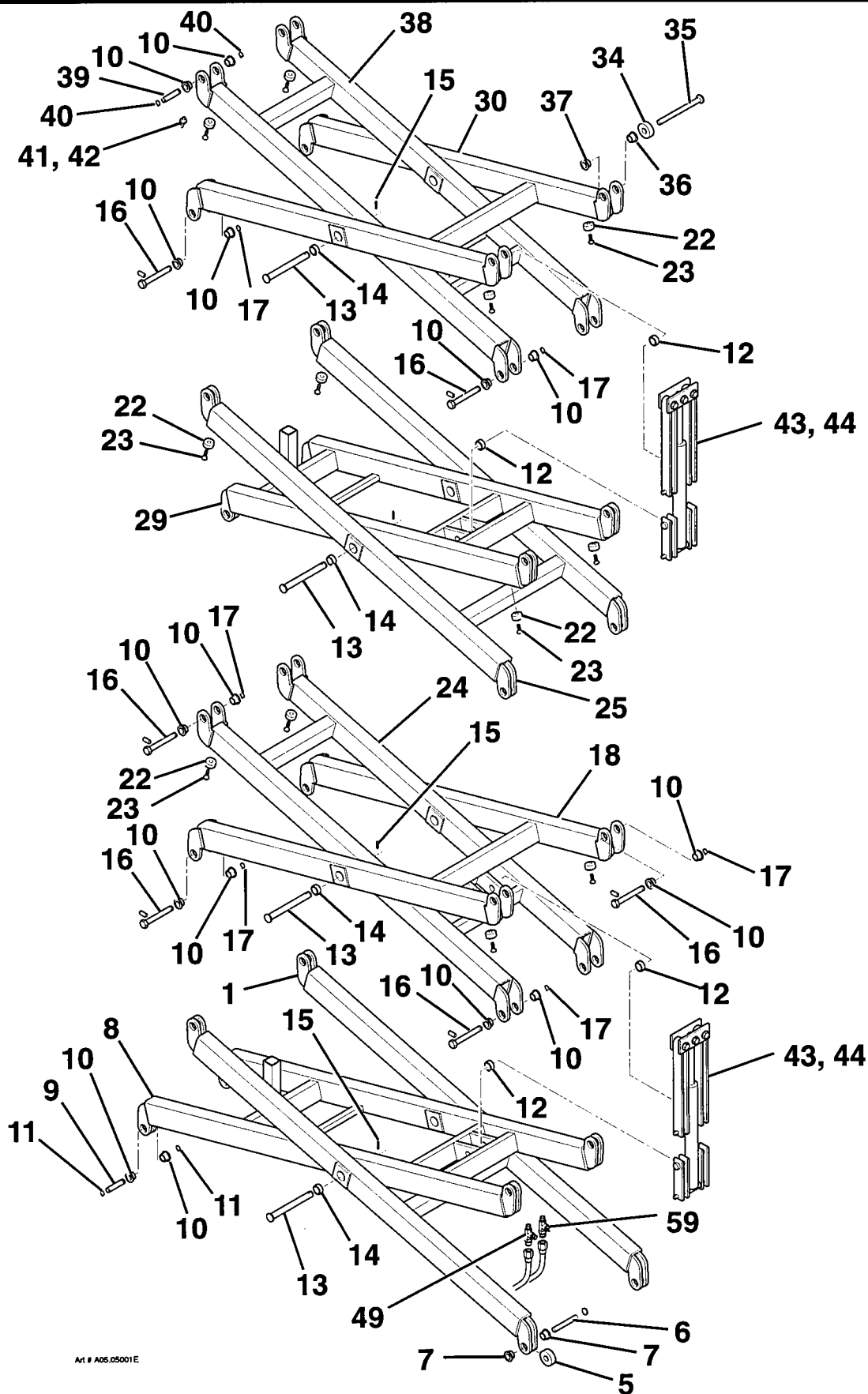
NEW 09 NOV., 1994

PART
NO.

PLATE
NO.

04.99

PARTS LIST				
ITEM	PART NO	SEE SECTION	DESCRIPTION	QTY.
1	223 0350		ARM ASSEMBLY, SCISSOR (Outer, bottom [#1] segment)	1
2	50-800575		ARM, SCISSOR (Right)	1
3	50-800575		ARM, SCISSOR (Left)	1
4	48-800576		TUBE, SCISSOR ARM SPACER	1
5	48-800578		ROLLER, SCISSOR ARM (lower)	2
6	42-800579		PIN, SCISSOR ARM ROLLER (lower)	2
7	26-800577		BUSHING (Brass, flanged)	4
8	50-800568		ARM ASSEMBLY, SCISSOR (Inner, bottom [#1] segment) (includes service prop stand)	1
9	42-800521		PIN (Bottom [#1] inner arm to undercarriage frame)	2
10	26-800527		BUSHING (Oilite brass, flanged)	32
11	42-800522		RING, SNAP	4
12	26-800581		BUSHING (Fibre glide)	8
13	42-800573		PIN, CENTER	8
14	26-800564		BUSHING (Fibre glide)	16
15	42-800574		ROLL PIN	8
16	42-800518		PIN (Arm to arm connecting)	12
17			RING, SNAP	A.R.
18	223 0360		ARM ASSEMBLY, SCISSOR (Outer, #2 segment)	1
19	50-800571		ARM, SCISSOR (Right)	1
20	50-800569		ARM, SCISSOR (Left)	1
21	48-800570		TUBE, SCISSOR ARM SPACER	1
22	10-214600		BUMPER (Nylon)	12
23	07-015003		MACHINE SCREW, FLAT HEAD (1/4"-20 x 3/4", Grade 5)	12
24	50-800572		ARM ASSEMBLY, SCISSOR (Inner, #2 segment)	1
25	223 0350		ARM ASSEMBLY, SCISSOR (Outer, #3 segment)	1
26	50-800567		ARM, SCISSOR (Right)	1
27	50-800565		ARM, SCISSOR (Left)	1
28	48-800566		TUBE, SCISSOR ARM SPACER	1
29	50-800568		ARM ASSEMBLY, SCISSOR (Inner, #3 segment)	1
30	223 0360		ARM ASSEMBLY, SCISSOR (Outer, top [#4] segment)	1
31	50-800562		ARM, SCISSOR (Right)	1
32	50-800563		ARM, SCISSOR (Left)	1
33	48-800557		TUBE, SCISSOR ARM SPACER	1
34	48-800560		ROLLER, SCISSOR ARM (upper)	2
35	42-800561		PIN, SCISSOR ARM ROLLER (upper)	2
36	26-800559		BUSHING (Brass, flanged)	2
37	42-800558		PIN, SPACER	2
38	50-800580		ARM ASSEMBLY, SCISSOR (Inner, top [#4] segment)	1
39	42-800521		PIN (Top [#4] inner arm to platform deck)	2
40	42-800522		RING, SNAP	4
TITLE SCISSOR ARM ASSEMBLY, MODEL 2515 (PLATE 1 OF 2)				
PLATE NO. 05.05		SIMON AERIALS INC.		PART NO.
NEW 23 NOV., 1994				



Art # A05.05001E

TITLE

SCISSOR ARM ASSEMBLY, MODEL 2515 (PLATE 1 OF 2)

SIMON AERIALS INC.

NEW 23 NOV., 1994

PART
NO.

PLATE
NO.

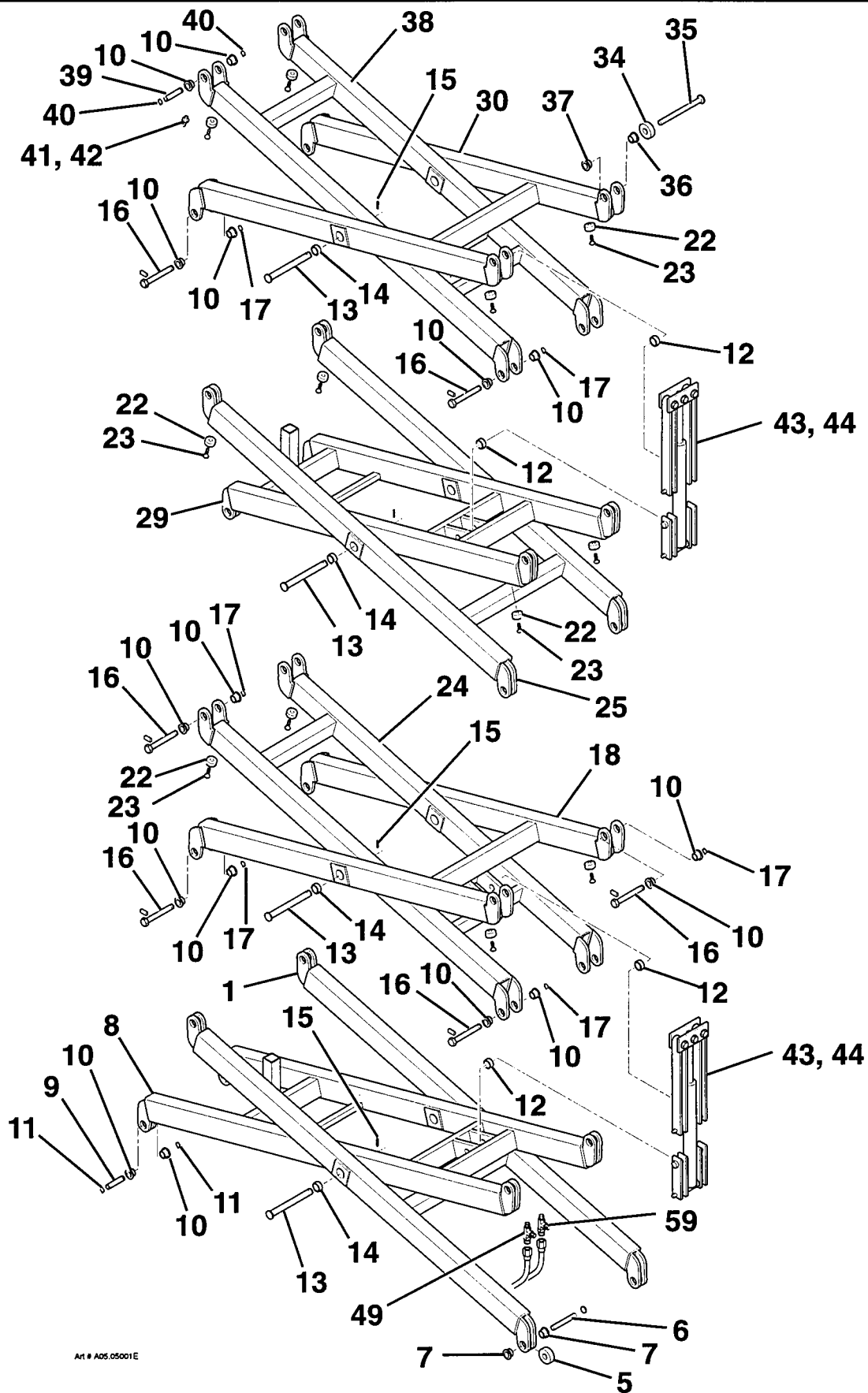
05.05

[illegible]

TITLE		SCISSOR ARM ASSEMBLY, MODEL 2515 (PLATE 2 OF 2)	
PLATE NO.	05.05	SIMON AERIALS INC. NEW 23 NOV., 1994	PART NO.

NEW 23 NOV., 1994

PART
NO.



Art # A05.05001E

TITLE

SCISSOR ARM ASSEMBLY, MODEL 2515 (PLATE 2 OF 2)

SIMON AERIALS INC.


NEW 23 NOV., 1994

PART
NO.

PLATE
NO.

05.05

PARTS LIST

ITEM	PART NO	SEE SECTION	DESCRIPTION	QTY.
			Note: Items marked "EX" MUST be replaced with IDENTICAL PARTS in order to maintain "EX" certification.	
			 DANGER	
			FAILURE TO USE APPROVED PARTS MAY CAUSE DEATH OR SERIOUS PERSONAL INJURY.	
1		EX	JUNCTION BOX, EXPLOSION-PROOF (12" x 24" x 6" [305 x 610 x 152 mm])	1
2			CAP SCREW, HEX HEAD	30
3			SUB PLATE	1
4			SCREW	4
5	03-609000	EX	BREAKER, CIRCUIT (250 Amp)	1
6	Call Simon	EX	RELAY, MOTOR START (24 Volt DC)	2
7	03-616800	EX	FUSE (12 Amp)	2
8	03-616600	EX	FUSE BLOCK, INTERRUPTER (Double)	1
9	Call Simon		DECAL, "USE 12 AMP FUSE TRM 12"	1
10	03-486700	EX	RELAY, PLUG IN (24 Volt DC, single pole, double throw)	1
11	03-051600	EX	SOCKET, RELAY (Single pole, snap mount)	1
12	03-710400	EX	RELAY, ISOLATOR	1
13	Call Simon		RAIL, TERMINAL (1 M (39.4") long. Cut to fit.)	A.R.
14	Call Simon	EX	NIPPLE	1
15	03-616500	EX	COMPOUND, SEALING ("Chico" compound. Required for electrical fittings) (16 Oz [.498 Kg] container)	A.R.
16	Call Simon		METER, COMBINATION (Battery and hour meter)	1
17	Call Simon		INSTALLATION KIT, COMBINATION METER (needed to install combination meter)	1

TITLE GROUND ELECTRICAL CONTROL BOX ASSEMBLY, 2515 EX SCISSORS

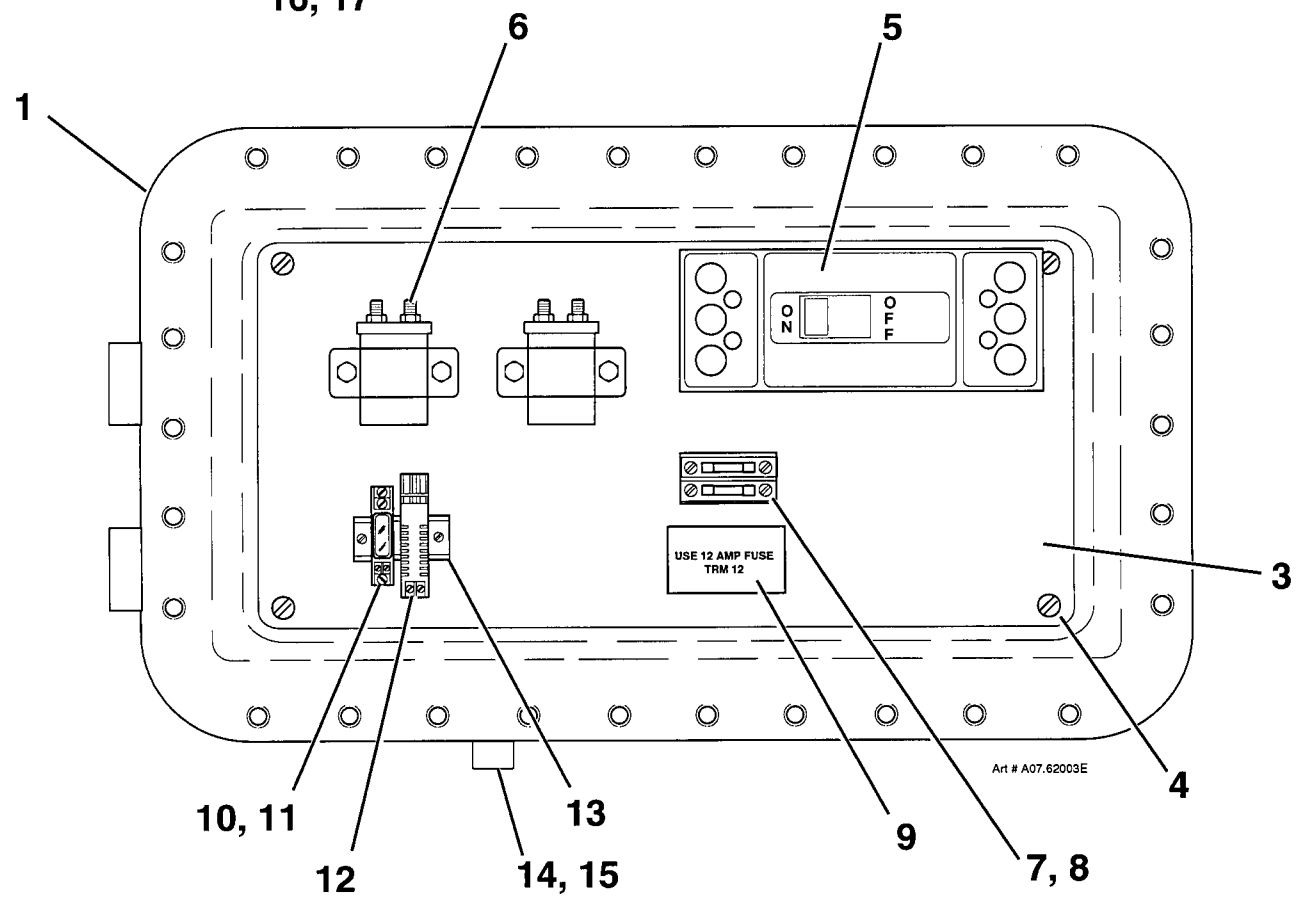
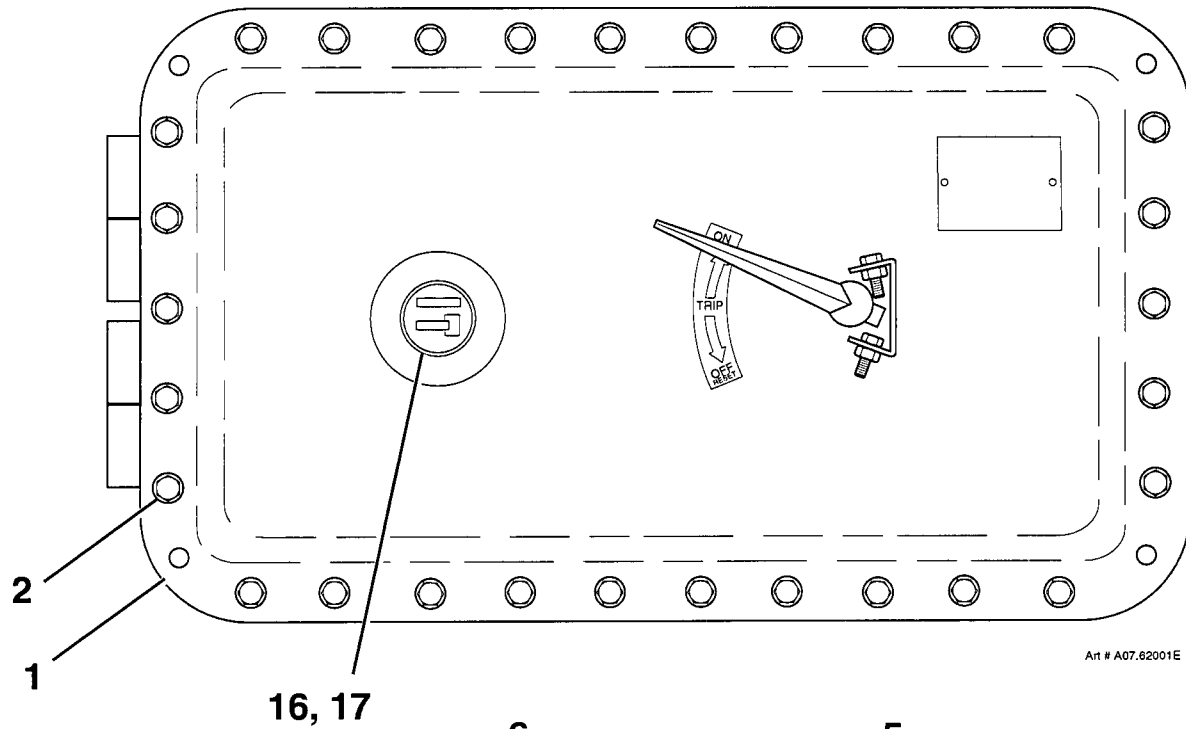
PLATE NO.

07.62

SIMON AERIALS INC.

REV. 28 JAN., 1996

PART NO.



TITLE GROUND ELECTRICAL CONTROL BOX ASSEMBLY, 2515 EX SCISSORS

SIMON AERIALS INC.

REV. 28 JAN., 1996

PART
NO.

PLATE
NO.

07.62

PARTS LIST

ITEM	PART NO	SEE SECTION	DESCRIPTION	QTY.
1	Call Simon		BRACKET, PLATFORM CONTROL	1
2	10-227900		DECAL, PLATFORM CONTROL VALVES (modified)	1
3	01-111400		VALVE, DRIVE AND STEER (Four way, three position)	1
4			ELBOW, MALE	2
5			ELBOW, MALE	2
6			CONNECTOR, MALE	2
7			CAP SCREW	A.R.
8			WASHER, FLAT	A.R.
9			NUT, LOCK	A.R.
10	01-111500		VALVE, TWO SPOOL (Platform Lift/ Lower; Traversing Deck In/ Out)	1
11			ELBOW, MALE	1
12			CAP SCREW	A.R.
13			WASHER, FLAT	A.R.
14			NUT, LOCK	A.R.
15	01-111200		VALVE, EMERGENCY STOP (Three way, two position, spring offset)	1
16			ELBOW, MALE	2
17			CONNECTOR, MALE	1
18			CAP SCREW	A.R.
19			NUT, LOCK	A.R.
20	01-111100		VALVE, DRIVE/ LIFT SELECTOR (Three way, two position)	1
21			ELBOW, MALE	1
22			CONNECTOR, MALE	2
23			CAP SCREW	A.R.
24			WASHER, FLAT	A.R.
25			NUT, LOCK	A.R.
26	06-303000		CROSS (6FP)	1
27	03-609800		CLAMP (#16)	2
28			CAP SCREW	2
29			WASHER, HELICAL LOCK	2
30			NUT, HEX	2
31			CONNECTOR, MALE	2
32			CONNECTOR, MALE	1
33			TEE	1

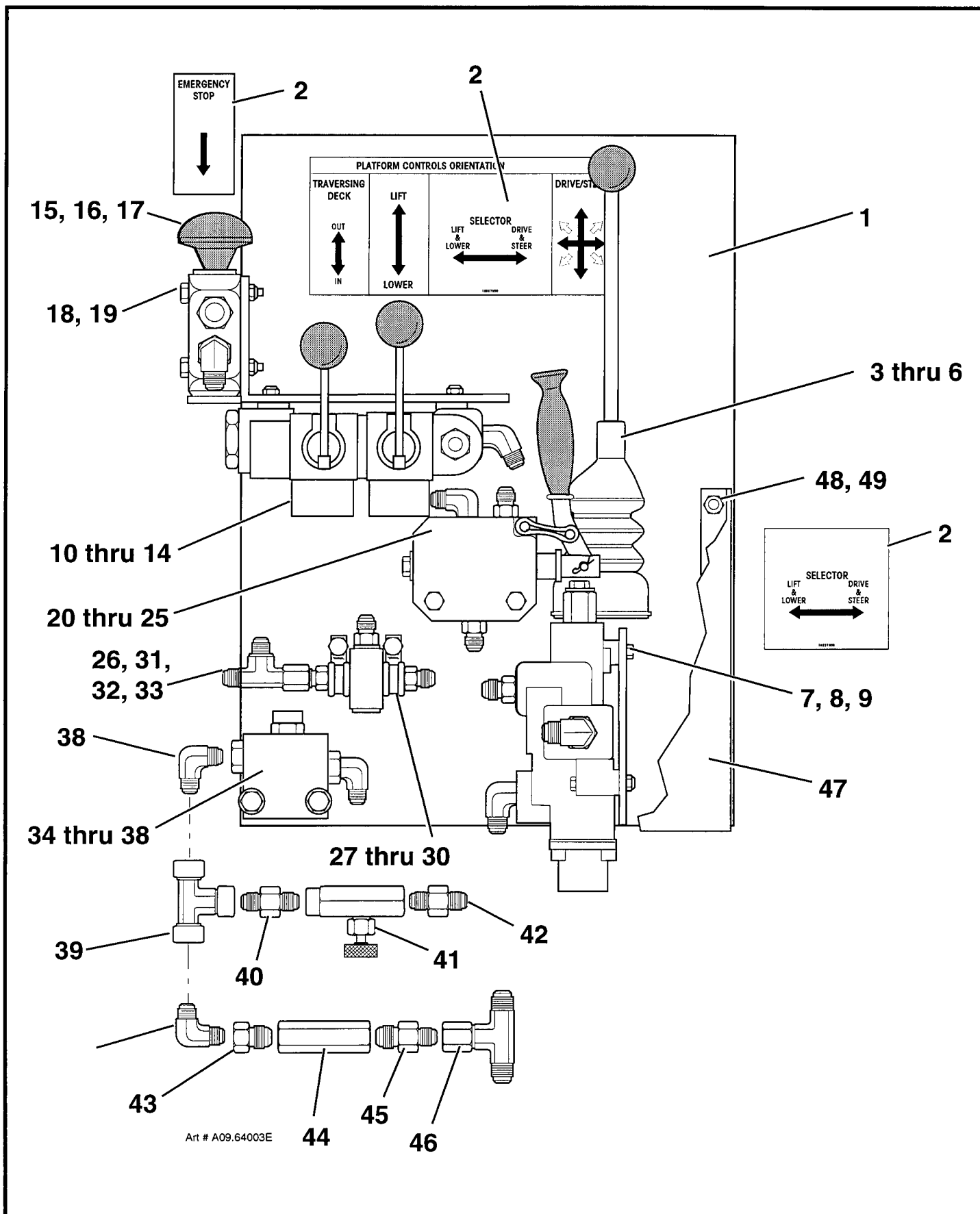
TITLE PLATFORM CONTROL ASSEMBLY, 2515 EX SCISSORS (PLATE 1 OF 2)

PLATE NO. 09.64

SIMON AERIALS INC.

REV. 28 JAN., 1996

PART NO.



TITLE PLATFORM CONTROL ASSEMBLY, 2515 EX SCISSORS (PLATE 1 OF 2)

SIMON AERIALS INC.

REV. 28 JAN., 1996

PART
NO.

PLATE
NO.

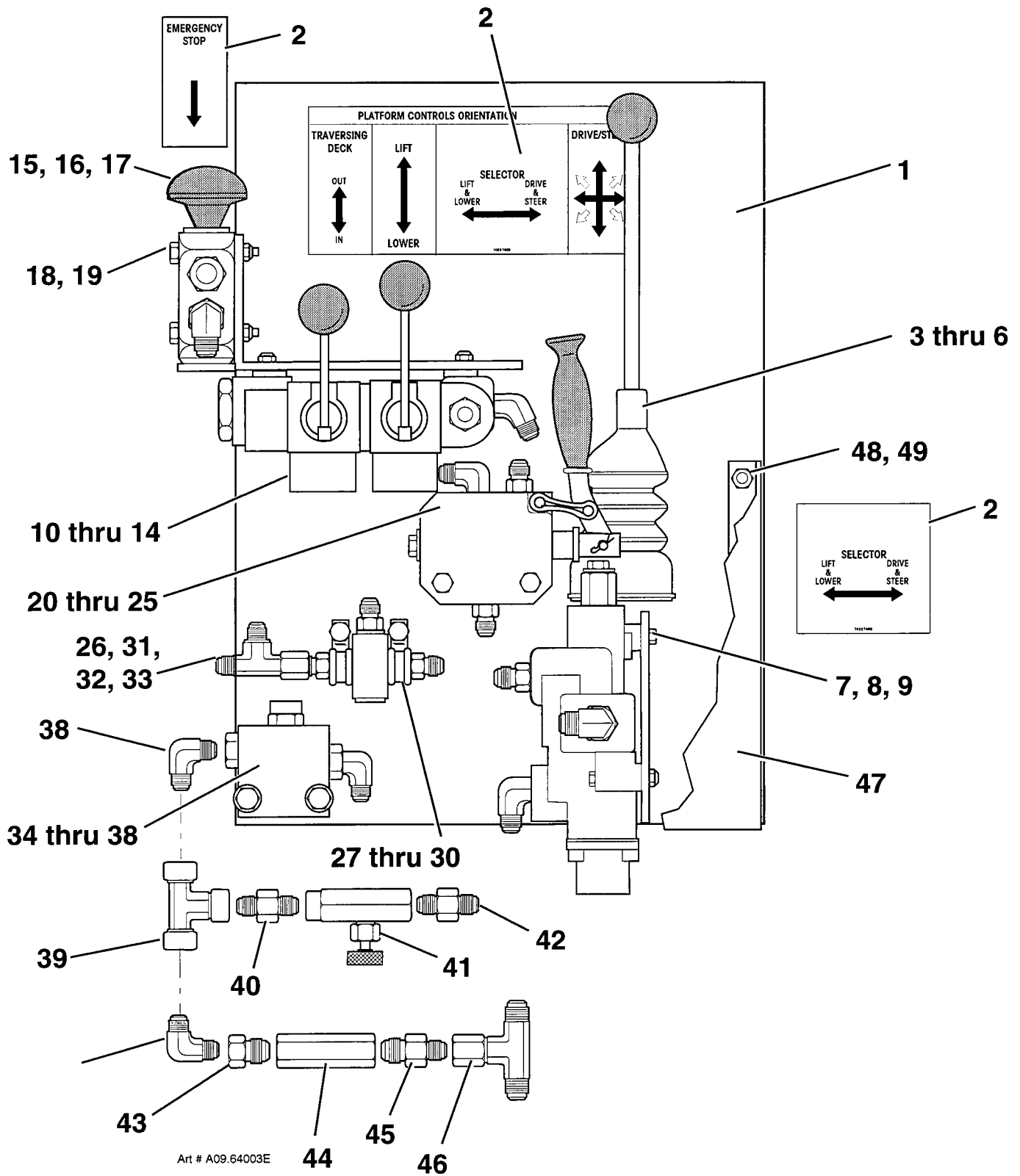
09.64

[illegible]

SIMON AERIALS INC.

REV. 28 JAN., 1996

PART
NO.



TITLE PLATFORM CONTROL ASSEMBLY, 2515 EX SCISSORS (PLATE 2 OF 2)

SIMON AERIALS INC.

REV. 28 JAN., 1996

PART
NO.

PLATE
NO. 09.64

PARTS LIST

[illegible]

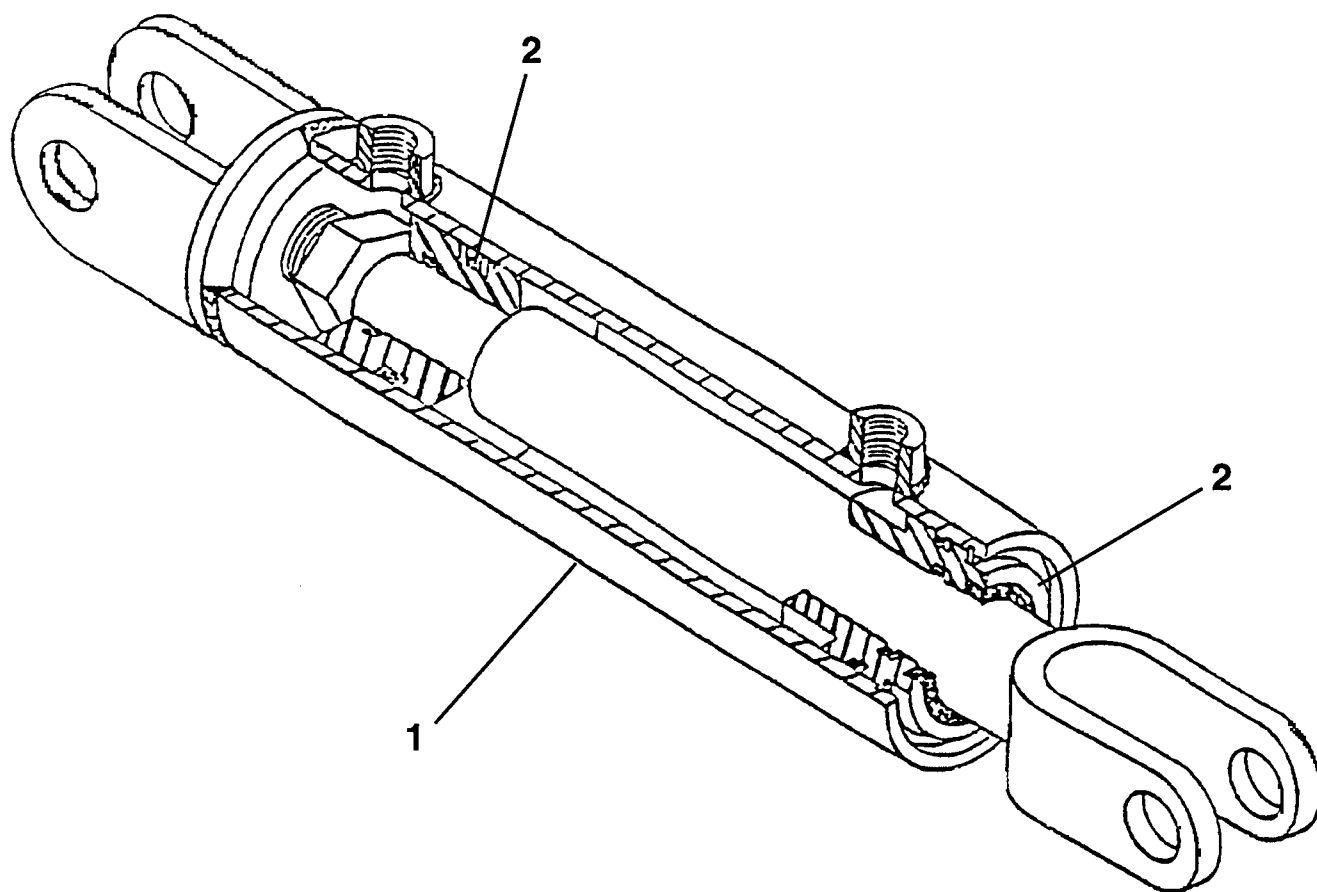
TITLE	STEER CYLINDER, 2515 SCISSORS; SKYHAWK 2031E, 2234E, 2248E
-------	--

PLATE NO. 11.54

SIMON AERIALS INC. NEW 11 OCT., 1994

PART NO. 04-027700

PART
NO.



TITLE STEER CYLINDER, 2515 SCISSORS; SKYHAWK 2031E, 2234E, 2248E

SIMON AERIALS INC.

NEW 11 OCT., 1994

PART NO. 04-027700

PLATE NO. 11.54

[illegible]

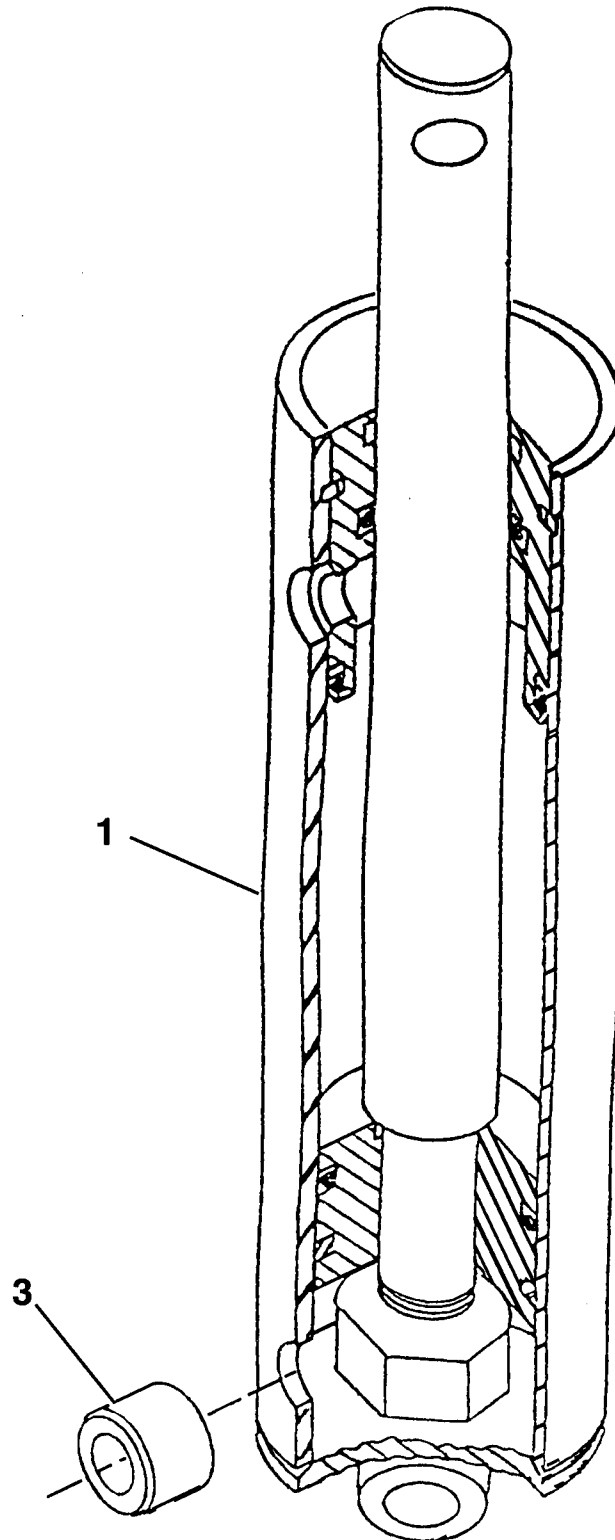
TITLE UPPER LIFT CYLINDER, 2515 SCISSORS

PLATE NO. 11.83

SIMON AERIALS INC.

NEW 11 OCT., 1994

PART
NO.



TITLE

UPPER LIFT CYLINDER, 2515 SCISSORS

SIMON AERIALS INC.

NEW 11 OCT., 1994

PART
NO.

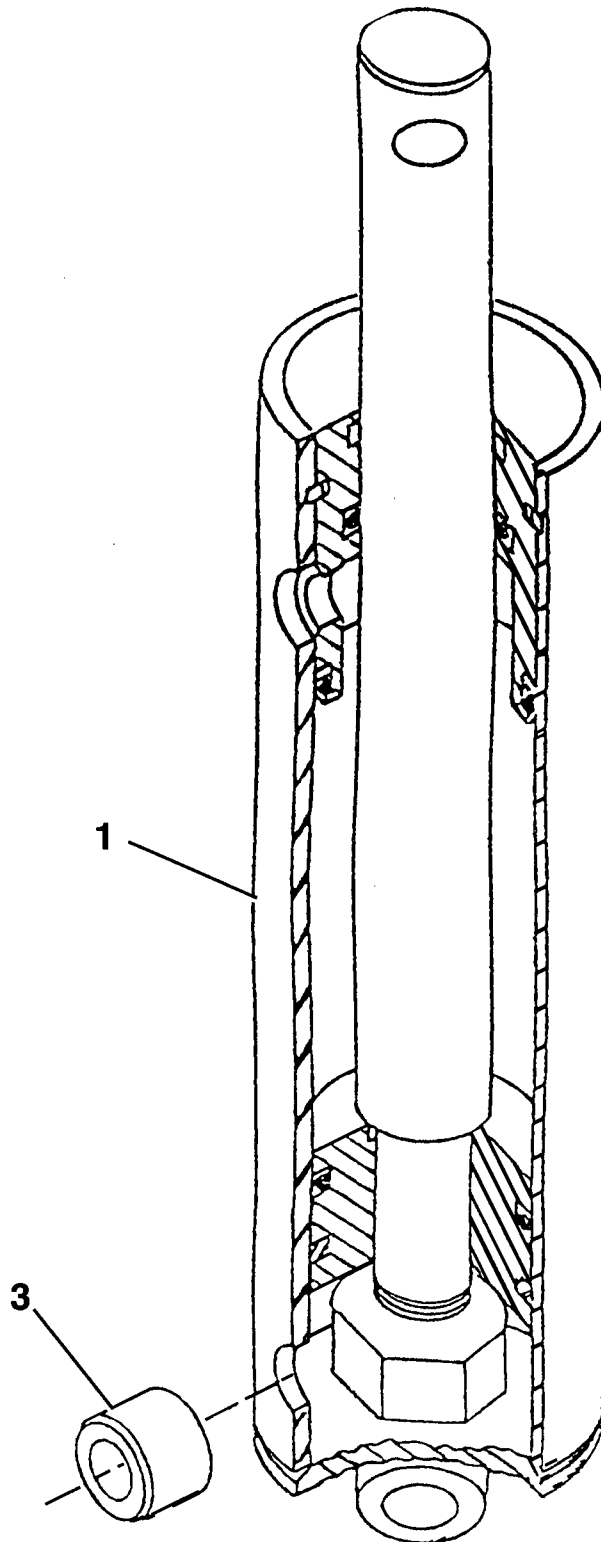
PLATE
NO.

11.83

[illegible]

LOWER LIFT CYLINDER, 2515 SCISSORS

PART NO.



TITLE

LOWER LIFT CYLINDER, 2515 SCISSORS

SIMON AERIALS INC.

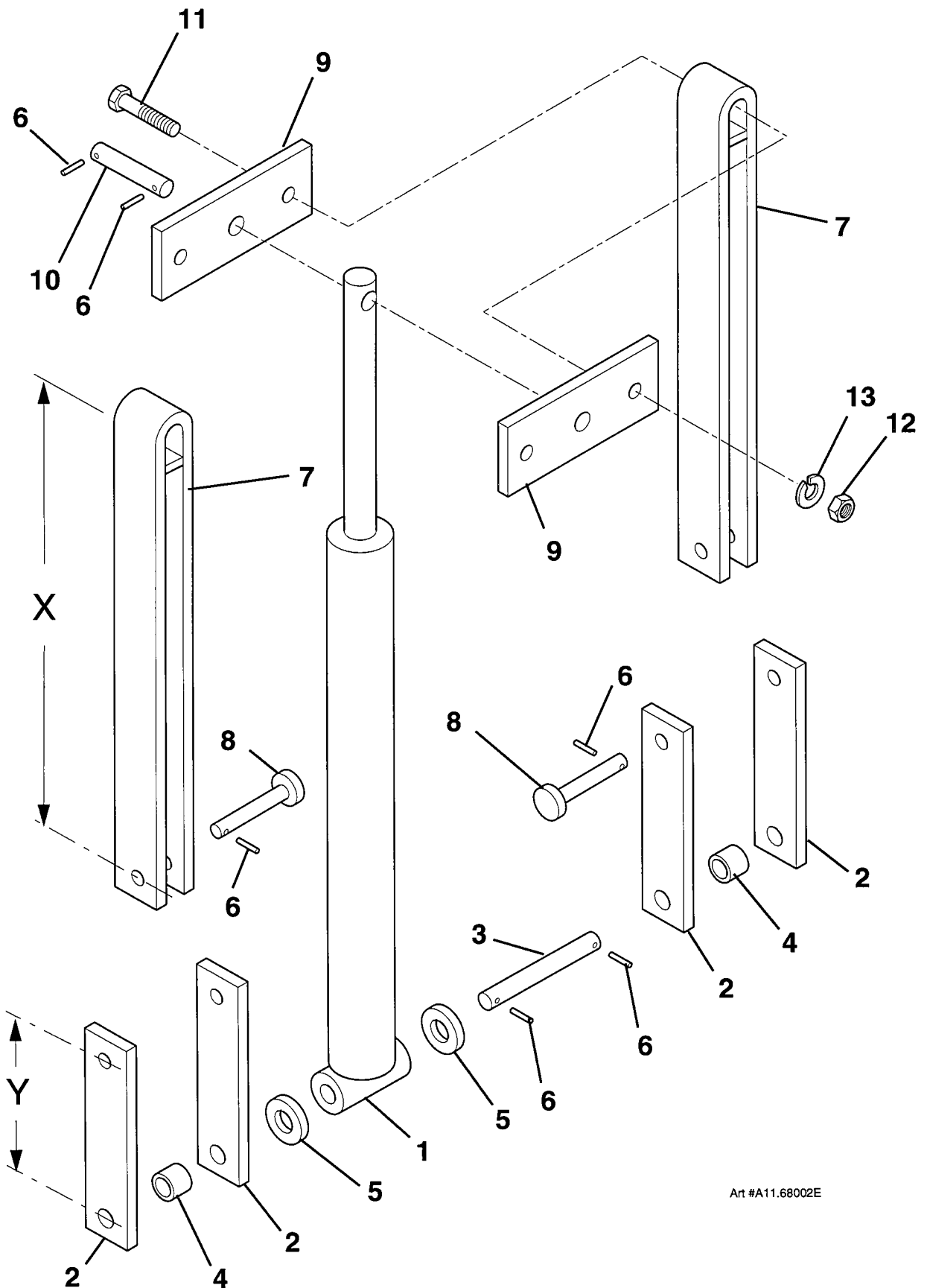
NEW 11 OCT., 1994

PART
NO.

PLATE
NO.

11.84

[illegible]



Art #A11.68002E

TITLE

UPPER LIFT CYLINDER MOUNTING, MODEL 2515 SCISSORS

SIMON AERIALS INC.

REV. 10 NOV., 1995

PART
NO.

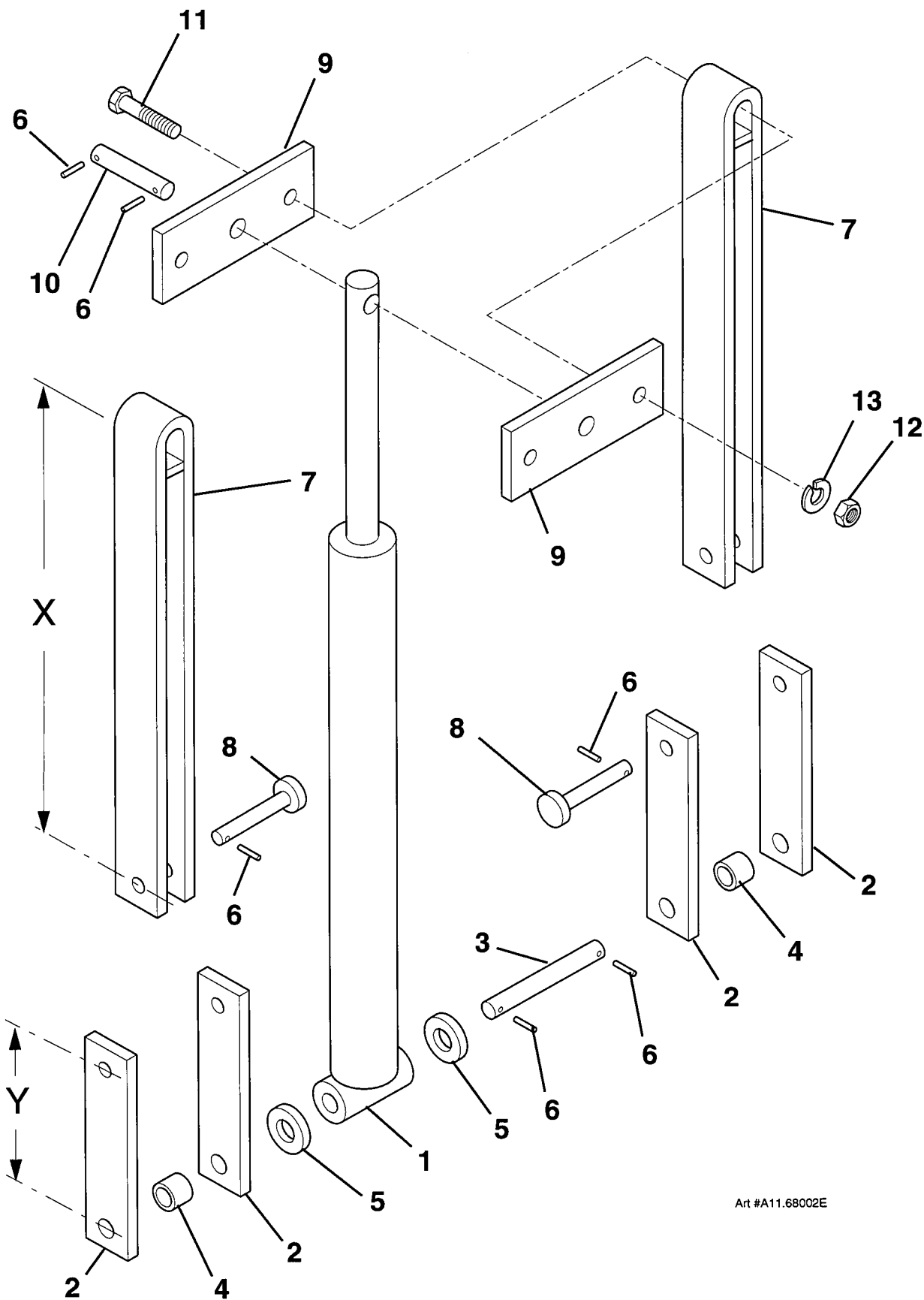
PLATE
NO.

11.85

[illegible]

PLATE NO.	11.86	SIMON AERIALS INC.
-----------	-------	--------------------

PART
NO.



Art #A11.68002E

TITLE LOWER LIFT CYLINDER MOUNTING, MODEL 2515 SCISSORS

SIMON AERIALS INC.

REV. 10 NOV., 1995

PART
NO.

PLATE
NO. 11.86

PARTS LIST

ITEM	PART NO	SEE SECTION	DESCRIPTION	QTY.
1	10-130400		DECAL, "DANGER" (Hazard listing, at Platform controls)	1
2	10-130000		DECAL, "DANGER" (Electrocution)	2
3	10-130300		DECAL, "DANGER" ("Keep away. Pinch points . . .")	
			(Decal must be modified for this application)	3
4	10-130200		DECAL, "WARNING" (Machine collapsing . . .)	1
5	10-269800		DECAL, GROUND CONTROL VALVES	1
6	10-228600		DECAL, "MOTOR RELEASE VALVE"	1
7	10-228700		DECAL, "BRAKE PUMP"	1
8	10-228800		DECAL, "BRAKE VALVE"	1
9	10-144500		DECAL, "MANUAL BRAKE RELEASE"	1
10	10-229600		DECAL, "24 VOLT BATTERY"	1
11	10-229200		DECAL, "CHARGING INSTRUCTIONS . . ."	1
12	10-230900		DECAL, "THIS VEHICLE . . . FOAM FILLED TIRES"	2
13	No Part #		DECAL, "LIFTING LUG"	4
14	10-226800		DECAL, "PLANT AIR"	1
15	10-227800		DECAL, "6800 LBS"	2
16	10-151300		PLACARD, "HYDRAULIC FLUID ONLY"	1
17	No Part #		DECAL, "USE 12 AMP FUSE TRM 12" (inside electrical box)	1
18	10-227900		DECAL, PLATFORM CONTROL VALVES (modified)	1
19	10-227700		DECAL, "Platform capacity 750 Lbs (340 Kg)"	
			(13-1/4" [337 mm] wide)	2
20	10-226000		DECAL, "Platform capacity 750 Lbs (340 Kg)"	
			(4-1/2" [114 mm] wide)	1
21	10-139800		DECAL, "OPERATOR'S MANUAL ENCLOSED"	1
22	10-226300		DECAL, MODEL "2515"	2
23	10-206000		DECAL, "EX" (Yellow, 5" [127 mm] circle)	4

TITLE

DECALS, 2515 EX SCISSORS

PLATE NO.

99.70

SIMON AERIALS INC.

REV. 28 JAN., 1996

PART NO.

